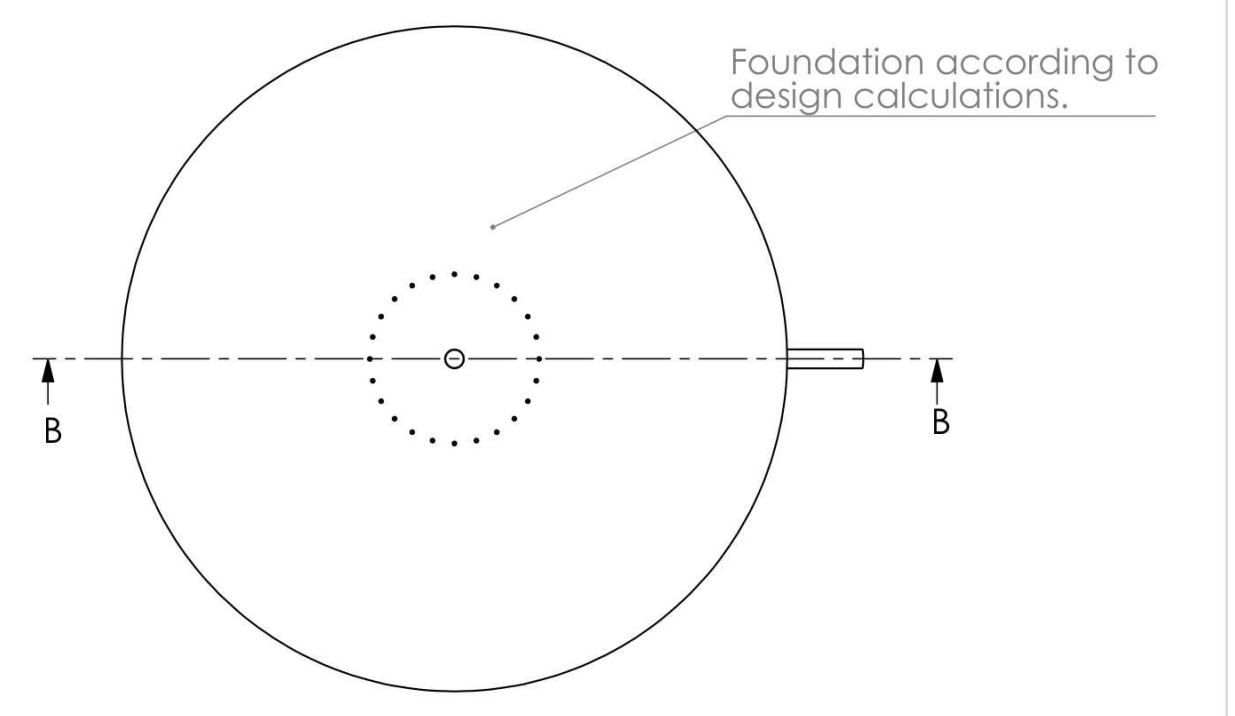
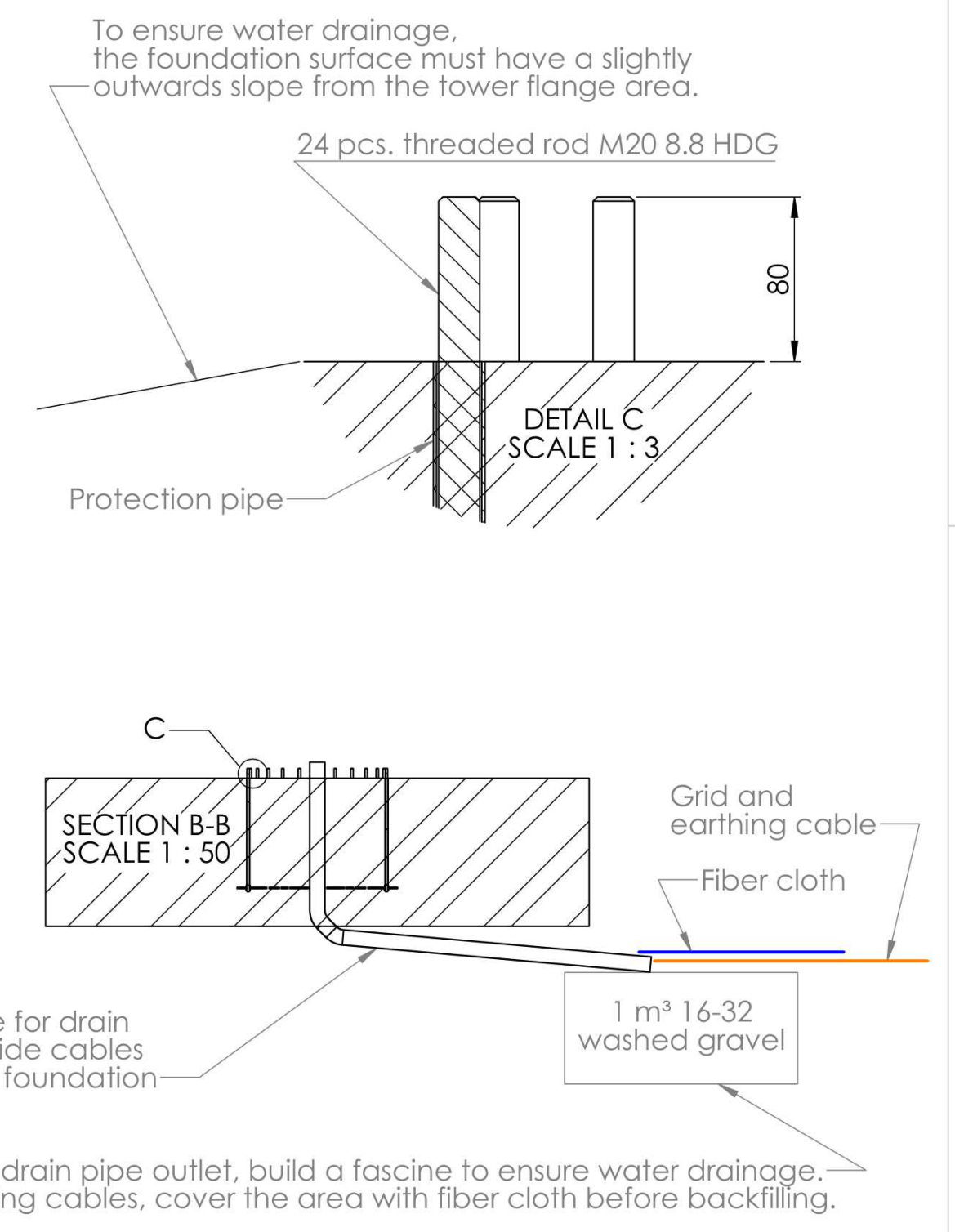
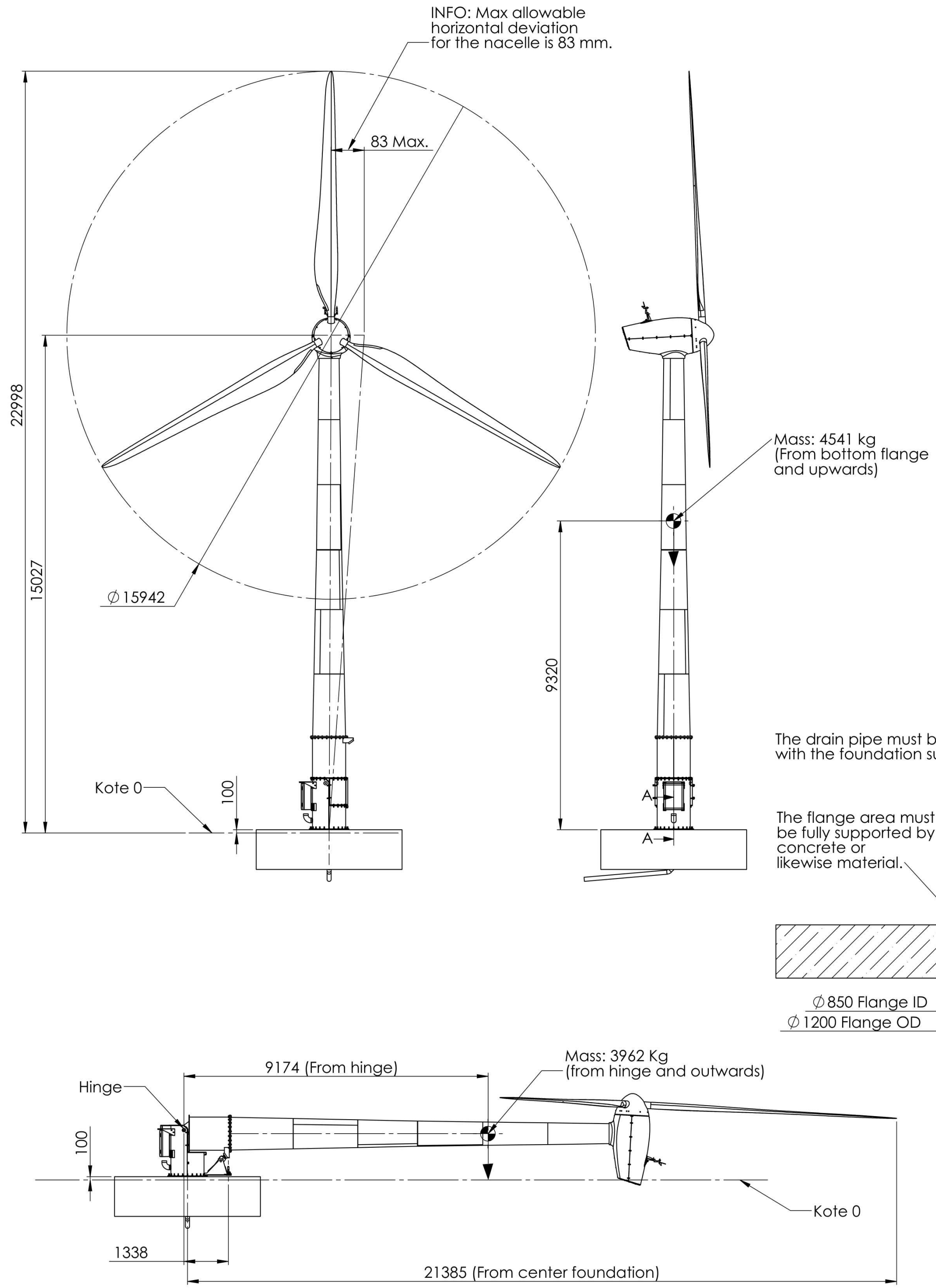


QTY:

Wind turbine	SWP-011	
Configuration	SWP25-16TG20-OT15	
Weights		
Nacelle and rotor	1972 kg	
Tower	2569 kg	
Turbine (excl. foundation)	4541 kg	
Wind loads		
IEC wind class	III	
Ultimate loads	Shear force (F)	Moment (M)
- Wind load on rotor	23.8 kN	356.6 kNm
- Wind load on tower	10.3 kN	87.9 kNm
- Total wind load	34.1 kN	444.5 kNm

Note: Loads are without partial safety factor



Item no.	Mass (kg)	Certificate	Format	Status	Revised by	Created date	Created by
			A2	approved		2023-02-01	
Material			Scale	Replaces	PDM rev.	Approved date	Approved by
			1:100		1	2023-02-17	
Proj.			Item				
			SWP25-16TG20-OT15				
SolidWorks			Metric	Drawing no.	Ver.	Sheet	
Dimensions shown in mm unless otherwise specified			SWP-011-LAYOUT		1	1 of 1	



WARNING: PROPRIETARY AND CONFIDENTIAL INFORMATION. This document and the information set forth herein are confidential and proprietary to Solid Production A/S. It contains trade secrets, and independent economic value, actual or potential, may be derived from the document/information being generally known. In consideration of you reviewing this document you agree (I) to keep the information secret (II) only to use the information for the purpose specifically agreed with Solid Production A/S (III) not to disclose directly or indirectly any part of the information to any third party and (IV) not to make copies or reproductions thereof by whatsoever means or undertake any qualitative or quantitative analysis, reverse engineering or replication.

Mål uden direkte toleranceangivelse er i henhold til DS/EN 22768-mL og DS/EN ISO 13920-AE. Dimensions without specified tolerances according to EN 22768-mL and EN ISO 13920-AE.