

**Bijlage 3 Verbeelding toe- en afname bij
gehinderde woningen**

Bijlage 3 Verbeelding toe- en afname bij gehinderde woningen

Verschil in geluidbelasting bij gehinderde locaties - variant 'noord'

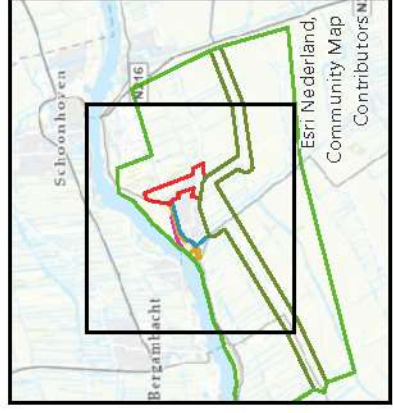
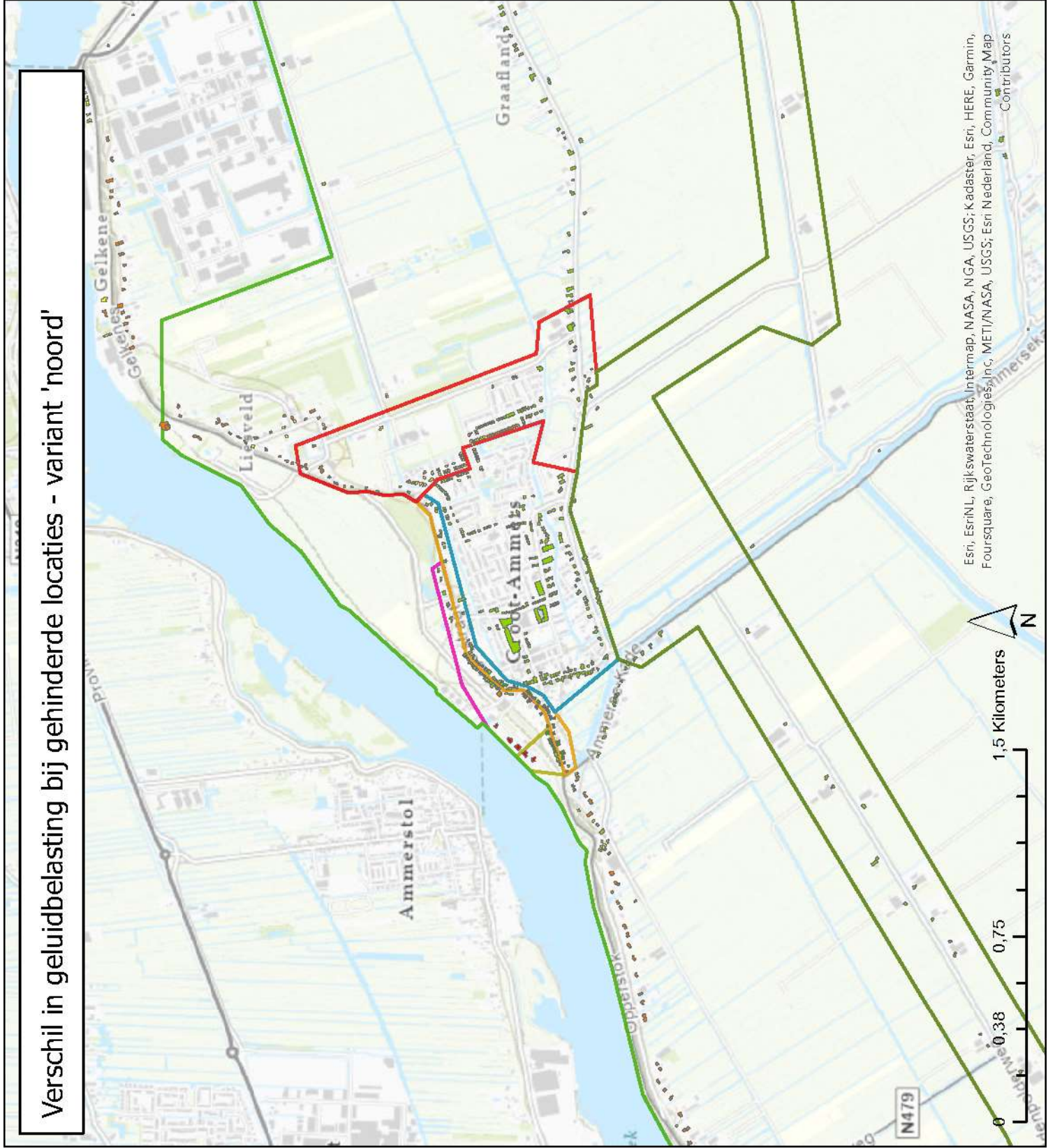
Legenda

Verschil geluidbelasting

- > 5 dB
- 3 - 5 dB
- 1 - 2 dB
- 5 - 0 dB
- < -5 dB

Deelgebieden

- Punt van Sluis aan de dijk
- Voorstraat-Noord
- Voorstraat-Zuid
- Rest kern Groot-Ammers
- Oost-Groot-Ammers
- Invloedsgebied Zuid 60
- Rest buitengebied



Esri, EsriNL, Rijkswaterstaat, Intermap, NASA, NGA, USGS; Kadaster, Esri, HERE, Garmin, Foursquare, Geotechnologies, Inc, METI/NASA, USGS; Esri Nederland, Community Map Contributors

Verskil in geluidbelasting bij gehinderde locaties - variant 'noord'

Legenda

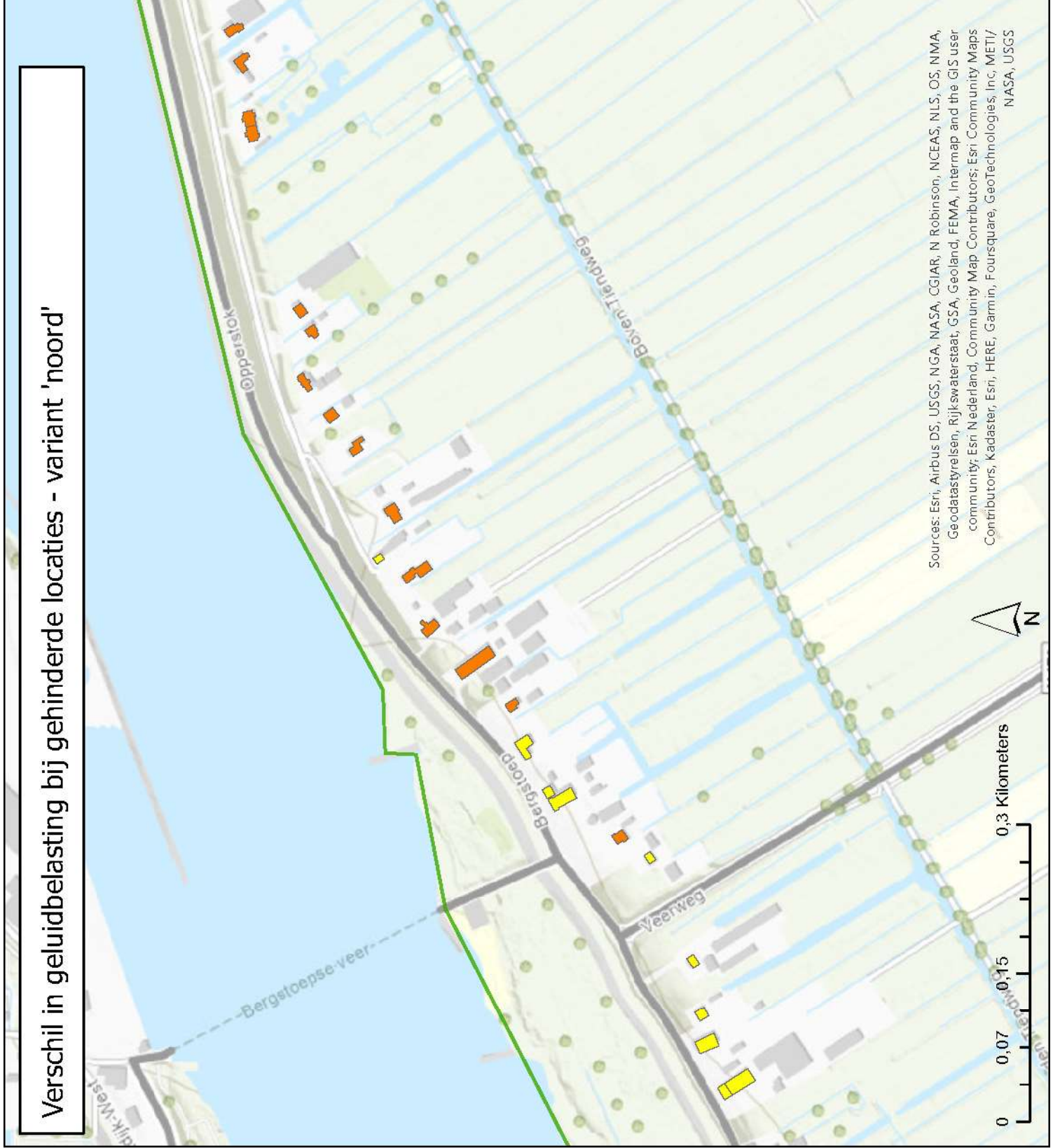
Verskil geluidbelasting

3 - 5 dB

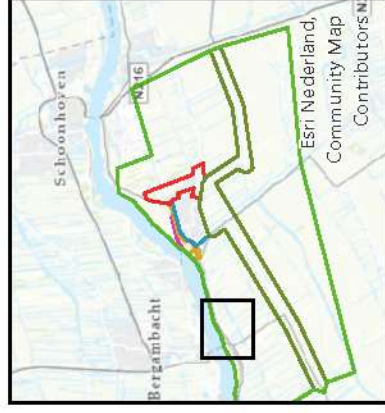
1 - 2 dB

Deelgebieden

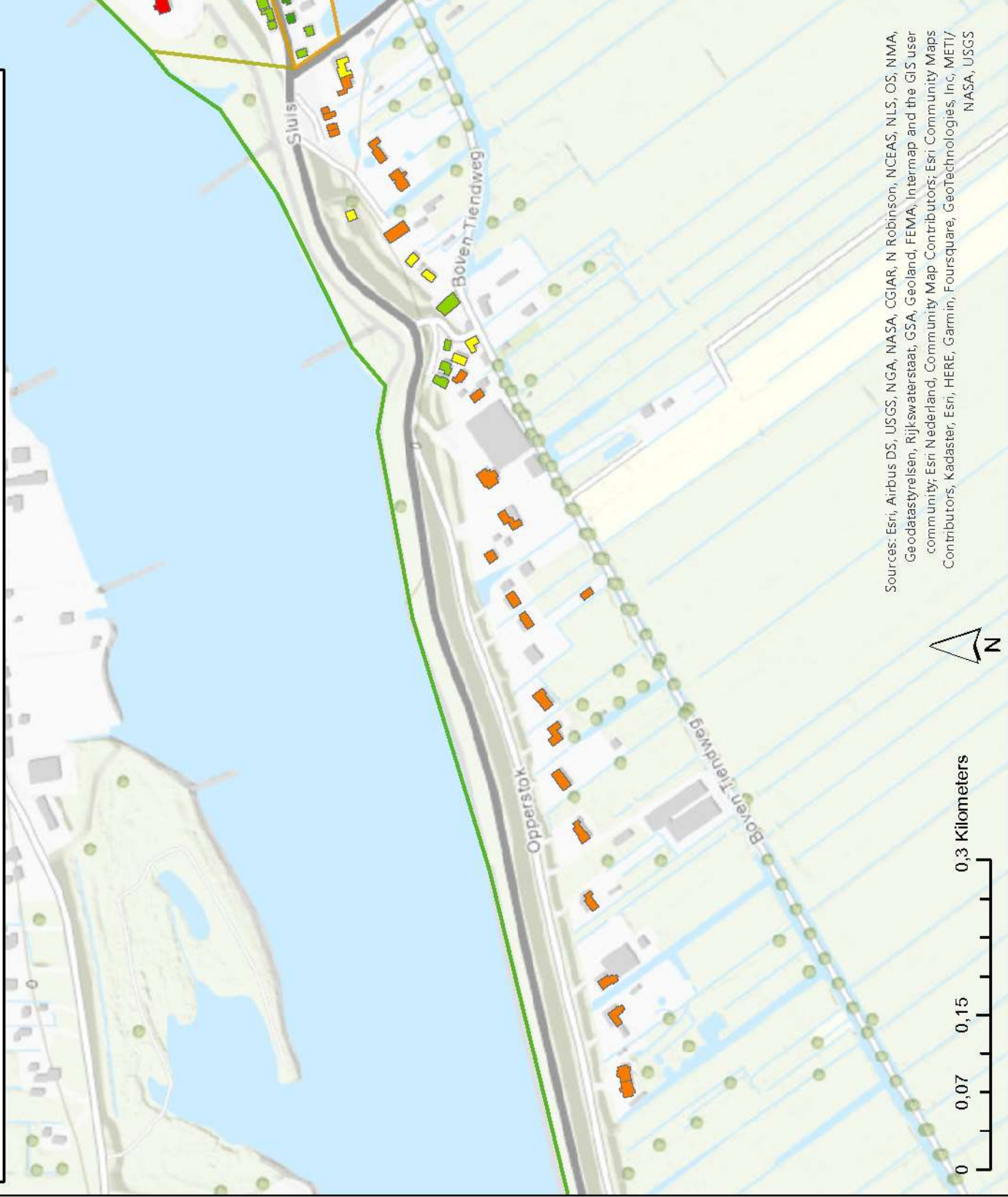
Rest buitengebied



Sources: Esri, Airbus DS, USGS, NGA, NASA, CGIAR, N Robinson, NCEAS, NLS, OS, NMA, Geodatastyrelsen, Rijkswaterstaat, GSA, Geoland, FEMA, Intermap and the GIS user community; Esri Nederland, Community Map Contributors; Esri Community Maps Contributors; Kadaster, Esri, HERE, Garmin, Foursquare, GeoTechnologies, Inc, METI/ NASA, USGS



Verschil in geluidbelasting bij gehinderde locaties - variant 'noord'



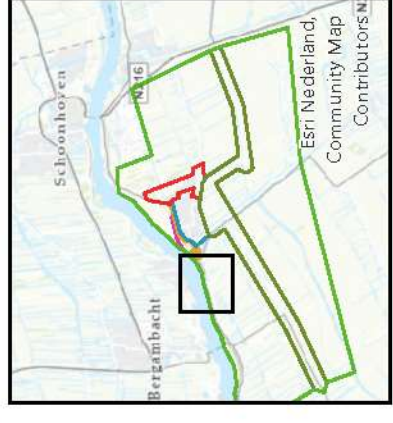
Legenda

Verschil geluidbelasting

- █ > 5 dB
- █ 3 - 5 dB
- █ 1 - 2 dB
- █ -5 - 0 dB
- █ < -5 dB

Deelgebieden

- Punt van Sluis aan de dijk
- Voorstraat-Zuid
- Rest buitengebied



Sources: Esri, Airbus DS, USGS, NGA, NASA, CGIAR, N Robinson, NCEAS, NLS, OS, NMA, Geodatastyrelsen, Rijkswaterstaat, GSA, Geoland, FEMA, Intermap and the GIS user community; Esri Nederland, Community Map Contributors; Esri Community Maps Contributors; Kadaster, Esri, HERE, Garmin, Foursquare, GeoTechnologies, Inc, METI/ NASA, USGS

Verskil in geluidbelasting bij gehinderde locaties - variant 'noord'

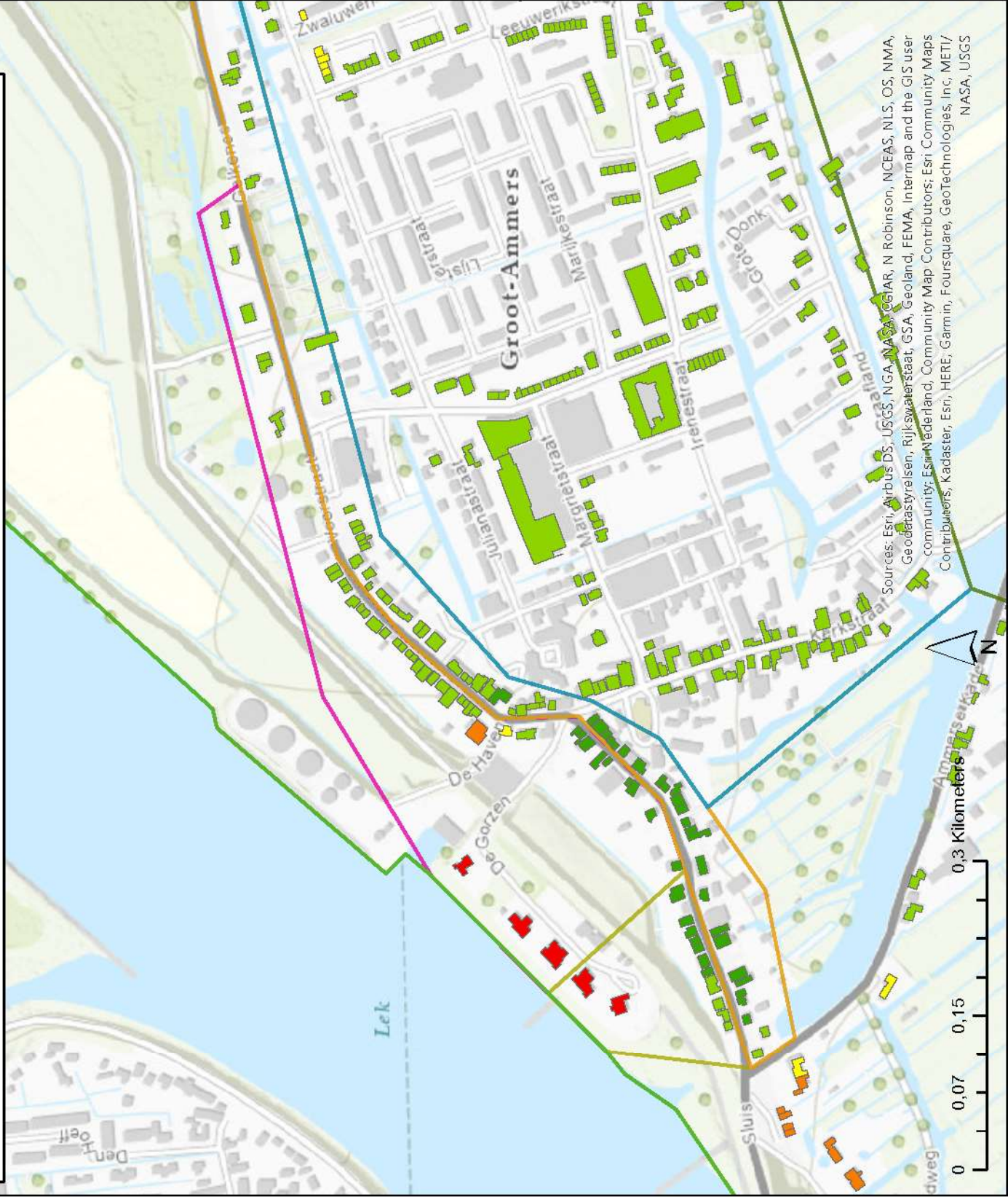
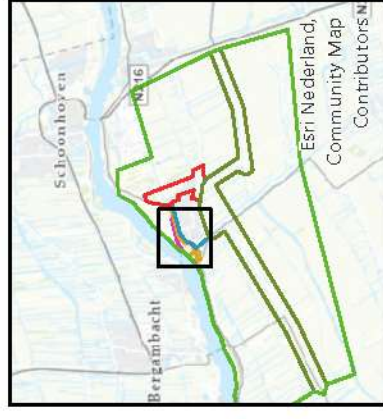
Legenda

Verskil geluidbelasting

- > 5 dB
- 3 - 5 dB
- 1 - 2 dB
- -5 - 0 dB
- < -5 dB

Deelgebieden

- Punt van Sluis aan de dijk
- Voorstraat-Noord
- Voorstraat-Zuid
- Rest kern Groot-Ammers
- Invloedsgebied Zuid 60
- Rest buitengebied



Sources: Esri, Airbus DS, USGS, NGA, NASA, CGIAR, N Robinson, NCEAS, NLS, OS, NMA, Geodatasyrielsen, Rijkswaterstaat, GSA, Geoland, FEMA, Intermap and the GIS user community; Esri Nederland, Community Map Contributors; Esri Community Maps Contributors; Kadaster, Esri, HERE, Garmin, Foursquare, GeoTechnologies, Inc, METI/ NASA, USGS



Verskil in geluidbelasting bij gehinderde locaties - variant 'noord'

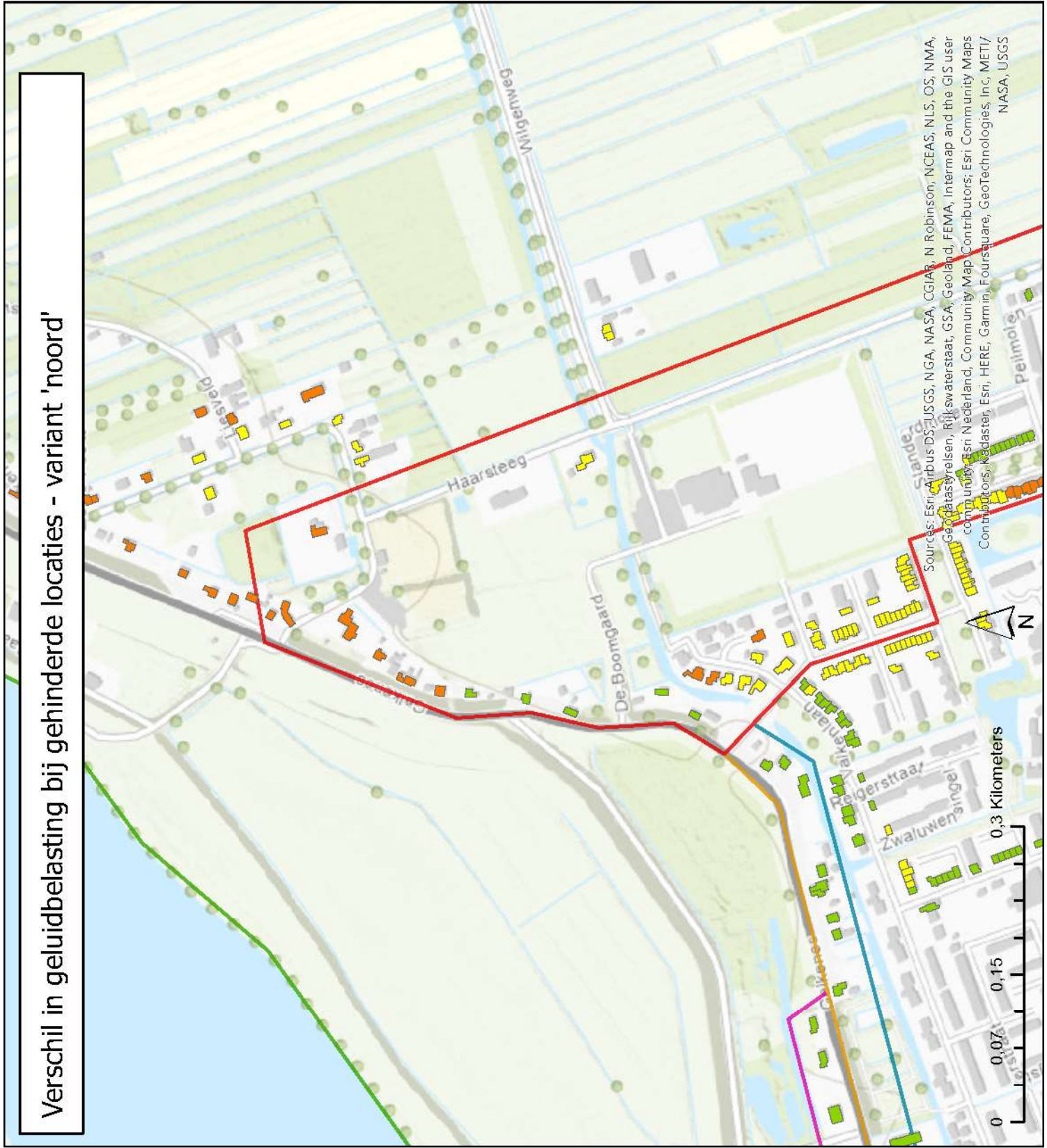
Legenda

Verskil geluidbelasting

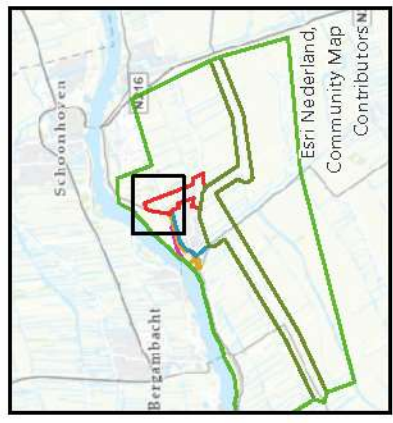
- 3 - 5 dB
- 1 - 2 dB
- 5 - 0 dB

Deelgebieden

- Voorstraat-Noord
- Voorstraat-Zuid
- Rest kern Groot-Ammers
- Oost-Groot-Ammers
- Rest buitengebied



Sources: Esri, Airbus DS, USGS, NGA, NASA, CGIAR, N Robinson, NCEAS, NLS, OS, NMA, Geodatastyrelsen, Rijkswaterstaat, GSA, Geoland, FEMA, Intermap and the GIS user community, Esri Nederland, Community Map Contributors; Esri Community Maps Contributors; Kadaster, Esri, HERE, Garmin, FourSquare, GeoTechnologies, Inc, METI/ NASA, USGS



Verschil in geluidbelasting bij gehinderde locaties - variant 'noord'

Legenda

Verschil geluidbelasting

3 - 5 dB

1 - 2 dB

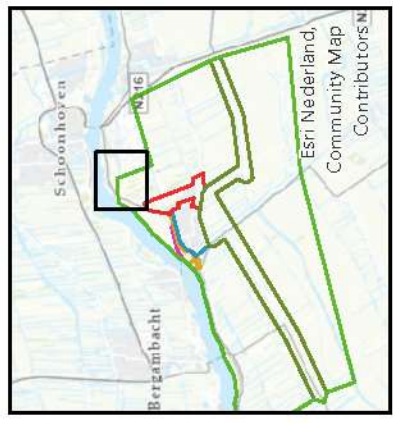
Deelgebieden

Oost-Groot-Ammers

Rest buitengebied



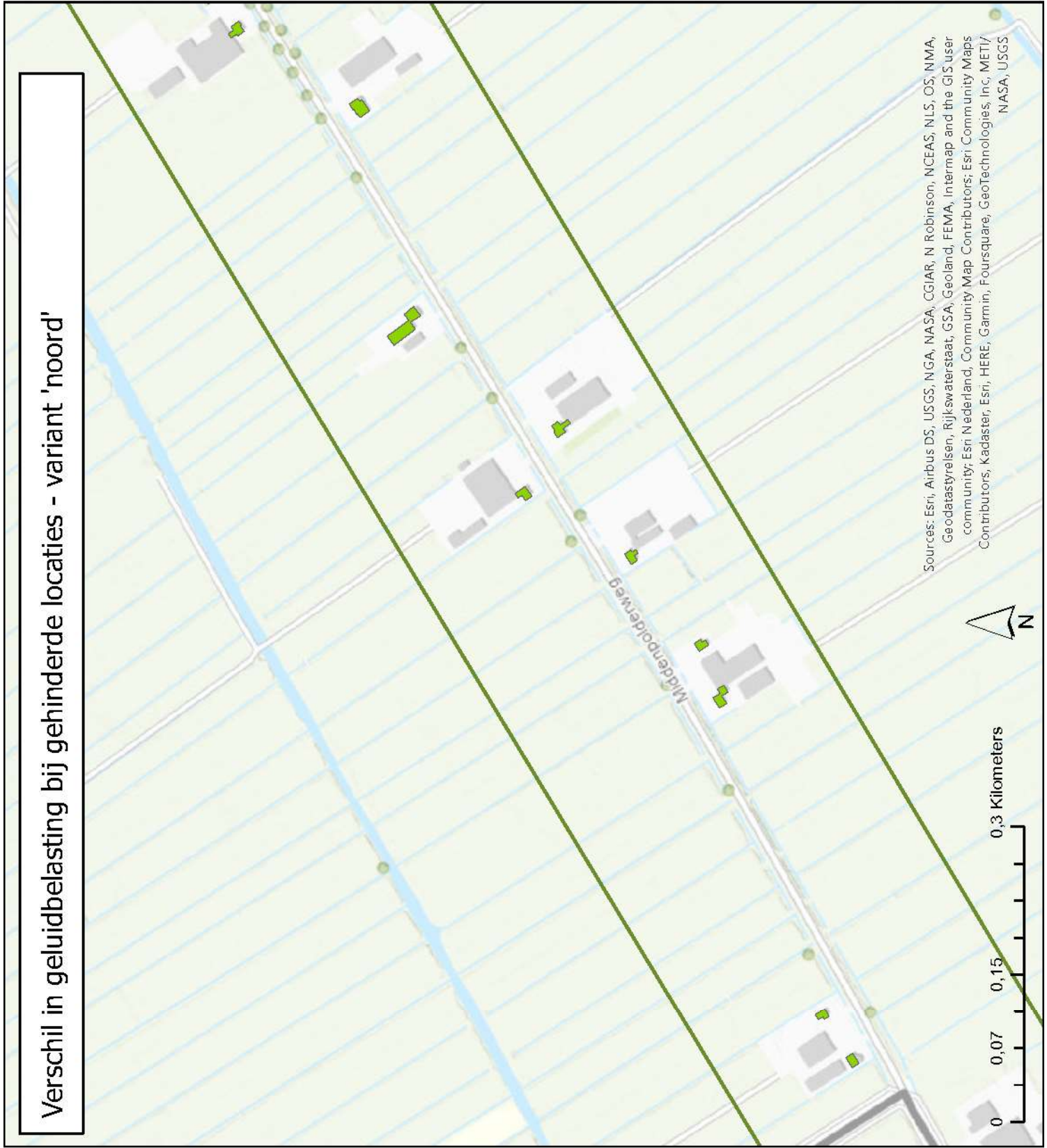
Sources: Esri, Airbus DS, USGS, NGA, NASA, CGIAR, N Robinson, NCEAS, NLS, OS, NMA, Geodatastyrelsen, Rijkswaterstaat, GSA, Geoland, FEMA, Intermap and the GIS user community; Esri Nederland, Community Map Contributors; Esri Community Maps Contributors; Kadaster, Esri, HERE, Garmin, Foursquare, GeoTechnologies, Inc, METI/ NASA, USGS



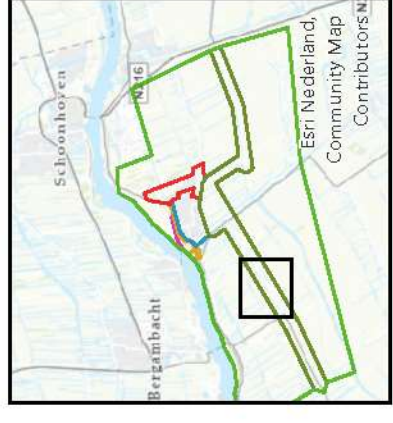
Verskil in geluidbelasting bij gehinderde locaties - variant 'noord'

Legenda

- Verskil geluidbelasting
- 5 - 0 dB
- Deelgebieden
- Invloedsgebied Zuid 60
- Rest buitengebied



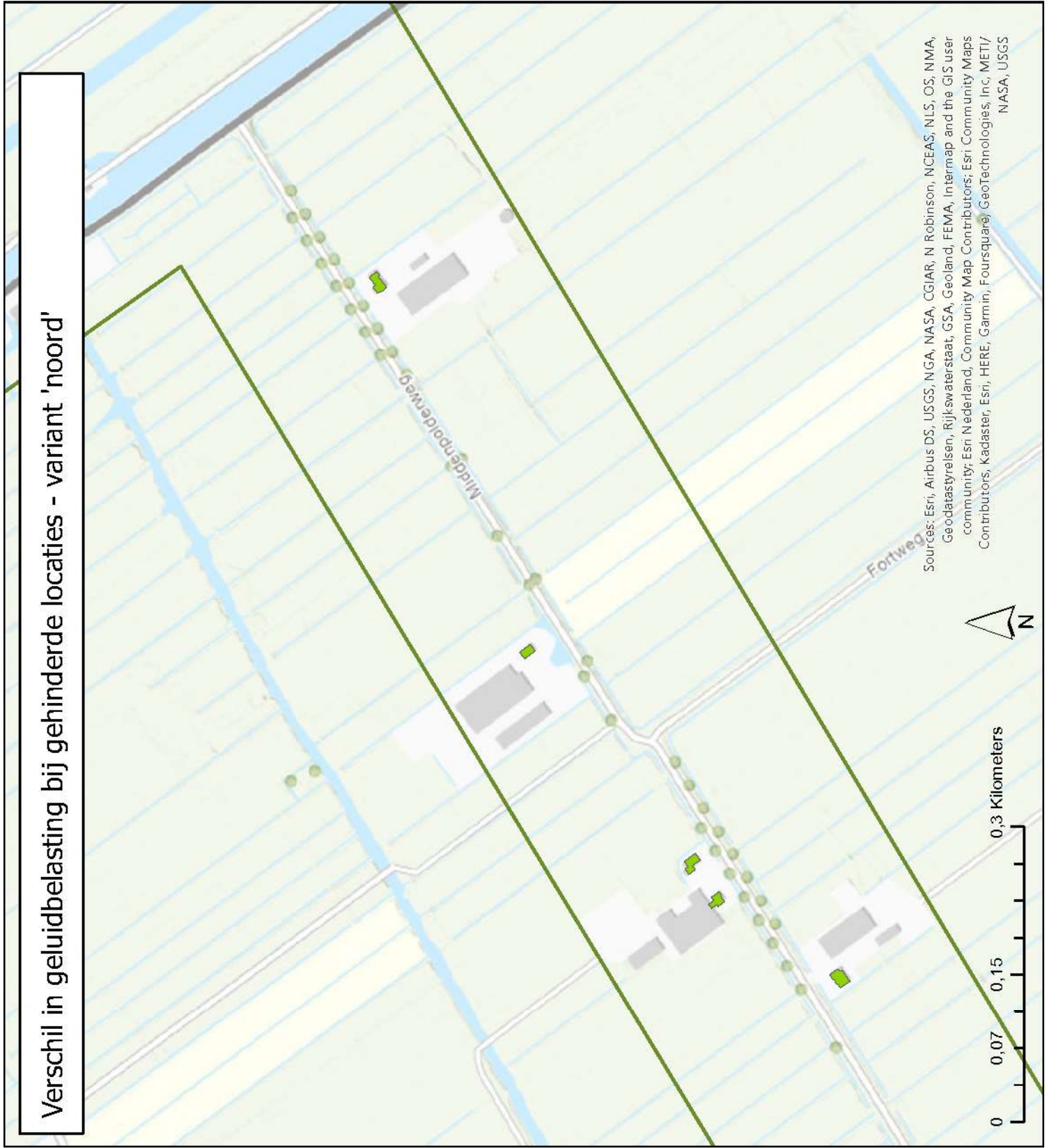
Sources: Esri, Airbus DS, USGS, NGA, NASA, CGIAR, N Robinson, NCEAS, NLS, OS, NMA, Geodatastyrelsen, Rijkswaterstaat, GSA, Geoland, FEMA, Intermap and the GIS user community; Esri Nederland, Community Map Contributors; Esri Community Maps Contributors; Kadaster, Esri, HERE, Garmin, Foursquare, GeoTechnologies, Inc, METI/ NASA, USGS



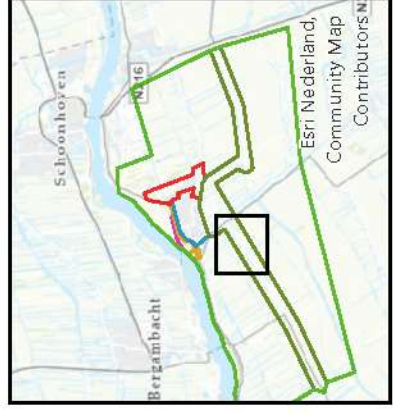
Verschil in geluidbelasting bij gehinderde locaties - variant 'noord'

Legenda

- Verschil geluidbelasting
- 5 - 0 dB
- Deelgebieden
- Invoedsgebied Zuid 60
- Rest buitengebied



Sources: Esri, Airbus DS, USGS, NGA, NASA, CGIAR, N Robinson, NCEAS, NLS, OS, NMA, Geodatastylelsen, Rijkswaterstaat, GSA, Geoland, FEMA, Intermap and the GIS user community; Esri Nederland, Community Map Contributors; Esri Community Maps Contributors; Kadaster, Esri, HERE, Garmin, Foursquare, GeoTechnologies, Inc, METI/ NASA, USGS



Verskil in geluidbelasting bij gehinderde locaties - variant 'noord'

Legenda

Verskil geluidbelasting

-5 - 0 dB

< -5 dB

Deelgebieden

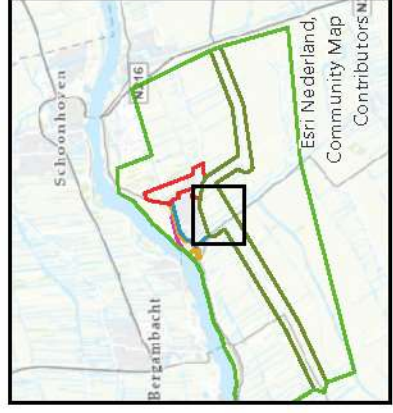
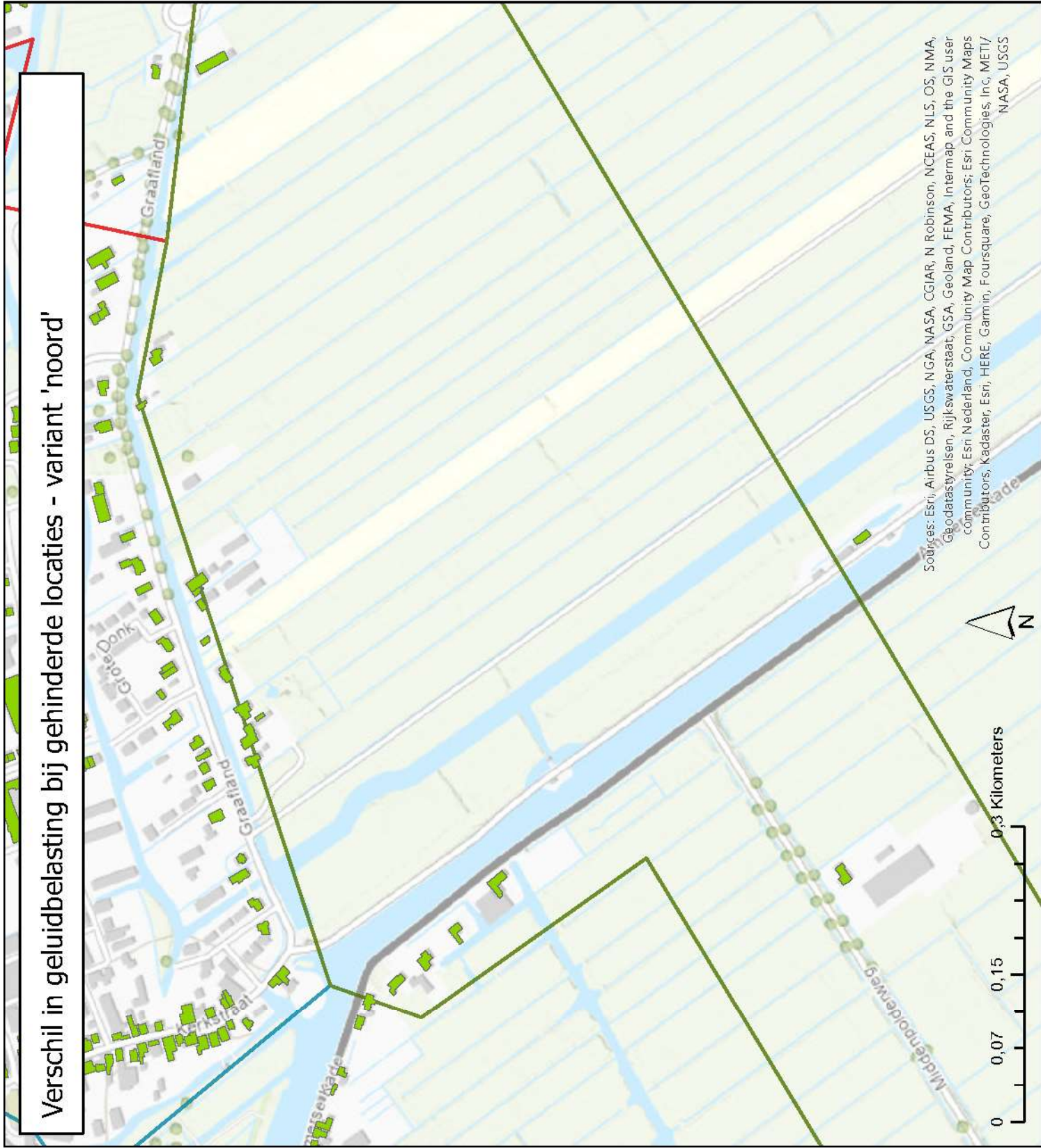
Voorstraat-Zuid

Rest kern Groot-Ammers

Oost-Groot-Ammers

Invloedsgebied Zuid 60

Rest buitengebied



Sources: Esri, Airbus DS, USGS, NGA, NASA, CGIAR, N Robinson, NCEAS, NLS, OS, NMA, Geodastyrelsen, Rijkswaterstaat, GSA, Geoland, FEMA, Intermap and the GIS user community; Esri Nederland, Community Map Contributors; Esri Community Maps Contributors; Kadaster, Esri, HERE, Garmin, Foursquare, GeoTechnologies, Inc, METI/ NASA, USGS



Verskil in geluidbelasting bij gehinderde locaties - variant 'noord'

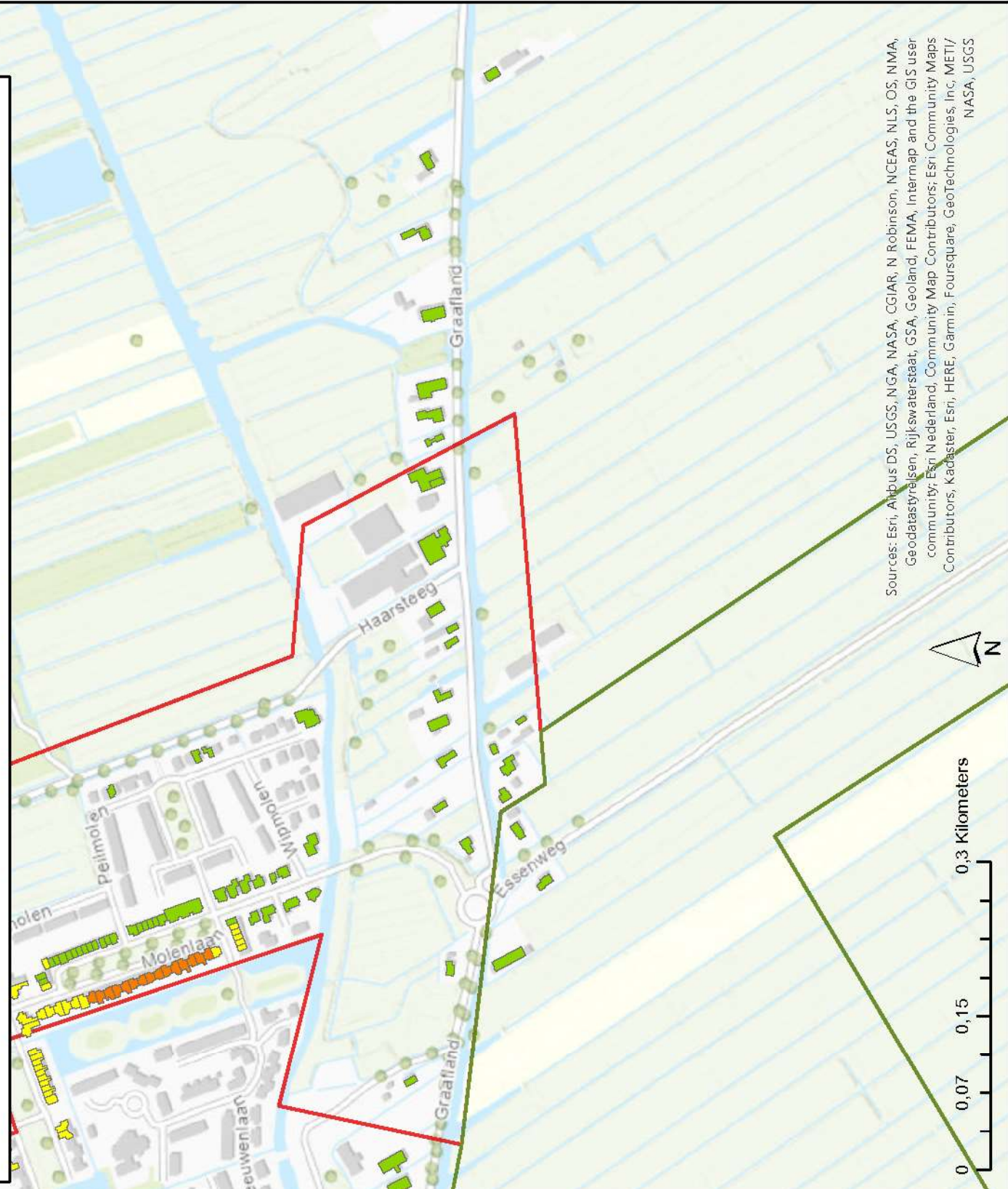
Legenda

Verskil geluidbelasting

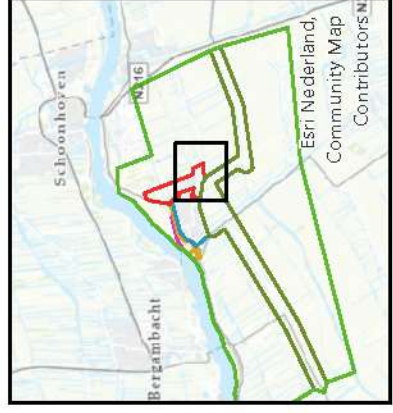
- 3 - 5 dB
- 1 - 2 dB
- 5 - 0 dB

Deelgebieden

- Rest kern Groot-Ammers
- Oost-Groot-Ammers
- Invloedsgebied Zuid 60
- Rest buitengebied



Sources: Esri, Airbus DS, USGS, NGA, NASA, CGIAR, N Robinson, NCEAS, NLS, OS, NMA, Geodastylrengen, Rijkswaterstaat, GSA, Geoland, FEMA, Intermap and the GIS user community; Esri Nederland, Community Map Contributors; Esri Community Maps Contributors; Kadaster, Esri, HERE, Garmin, Foursquare, GeoTechnologies, Inc, METI/ NASA, USGS



Verskil in geluidbelasting bij gehinderde locaties - variant 'noord'



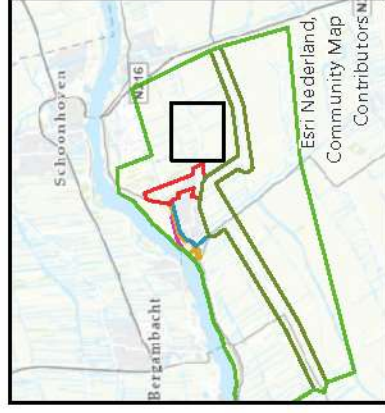
Legenda

Verskil geluidbelasting

-5 - 0 dB

Deelgebieden

Rest buitengebied

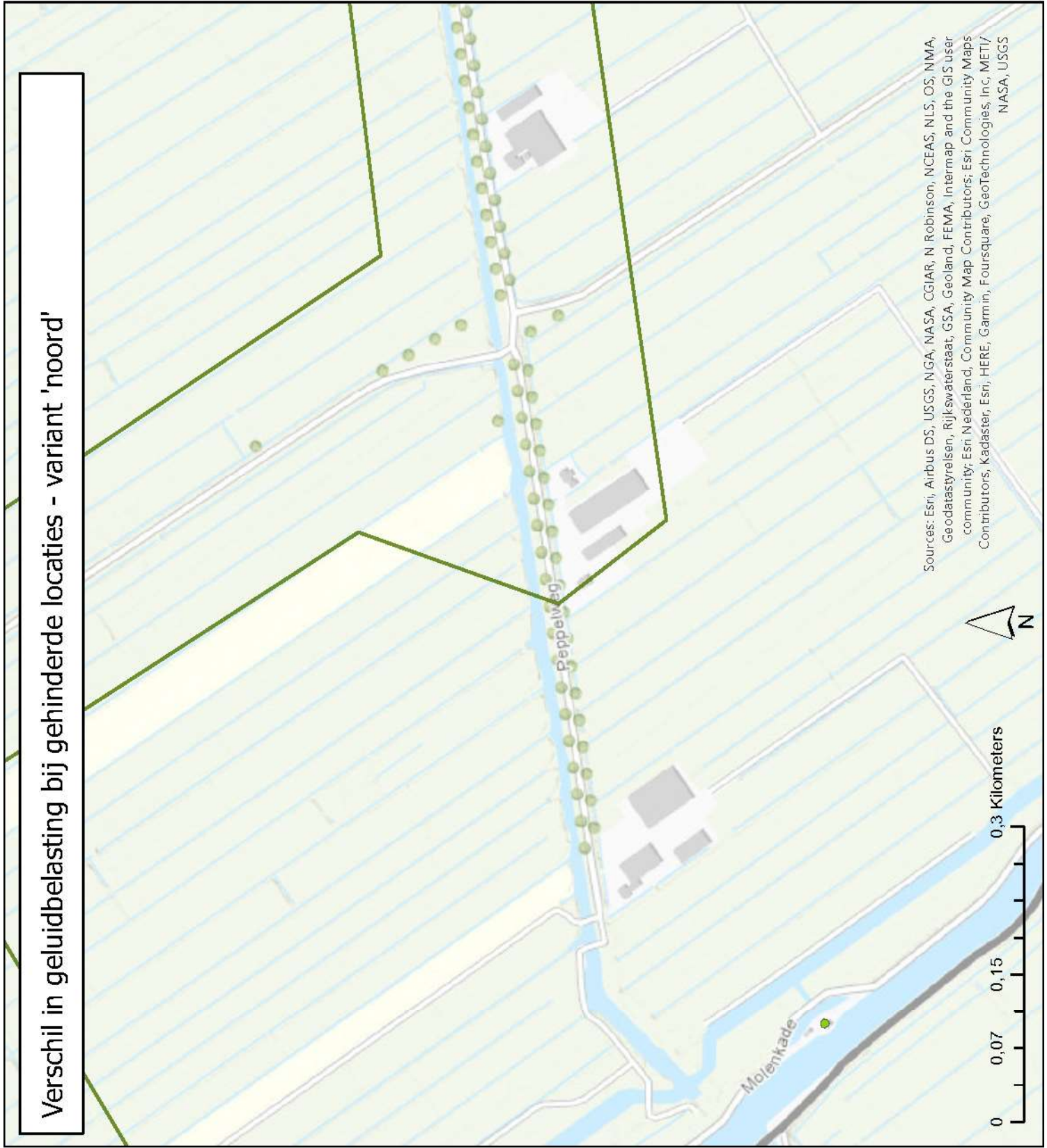


Sources: Esri, Airbus DS, USGS, NGA, NASA, CGIAR, N Robinson, NCEAS, NLS, OS, NMA, Geodastylelsen, Rijkswaterstaat, GSA, Geoland, FEMA, Intermap and the GIS user community; Esri Nederland, Community Map Contributors; Esri Community Maps Contributors; Kadaster, Esri, HERE, Garmin, Foursquare, GeoTechnologies, Inc, METI/ NASA, USGS

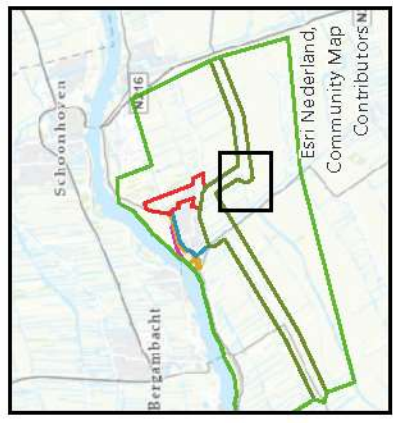
Verskil in geluidbelasting bij gehinderde locaties - variant 'noord'

Legenda

- Verskil geluidbelasting
- 5 - 0 dB
- Deelgebieden
- Invloedsgebied Zuid 60
- Rest buitengebied



Sources: Esri, Airbus DS, USGS, NGA, NASA, CGIAR, N Robinson, NCEAS, NLS, OS, NMA, Geodatastyrelsen, Rijkswaterstaat, GSA, Geoland, FEMA, Intermap and the GIS user community; Esri Nederland, Community Map Contributors; Esri Community Maps Contributors; Kadaster, Esri, HERE, Garmin, Foursquare, GeoTechnologies, Inc, METI/ NASA, USGS



Verschil in geluidbelasting bij gehinderde locaties - variant 'noord'

Legenda

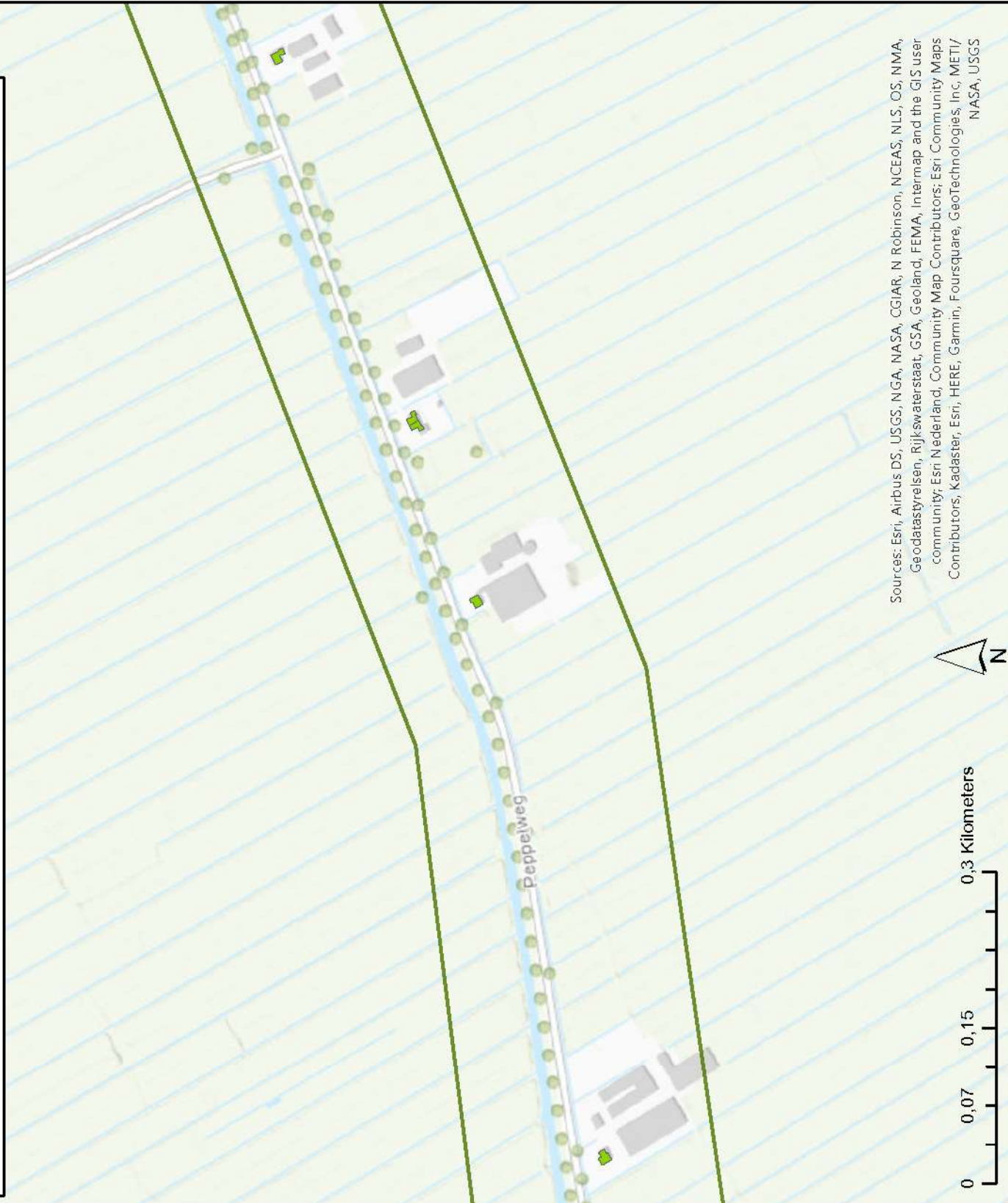
Verschil geluidbelasting

-5 - 0 dB

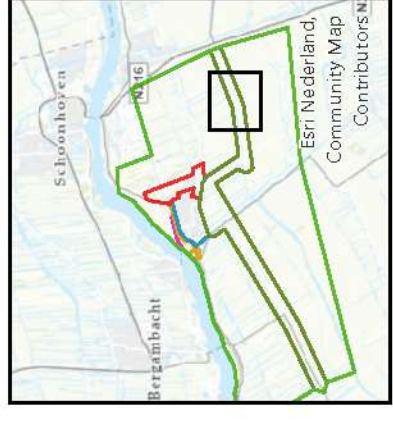
Deelgebieden

Invoedsgebied Zuid 60

Rest buitengebied



Sources: Esri, Airbus DS, USGS, NGA, NASA, CGIAR, N Robinson, NCEAS, NLS, OS, NMA, Geodastyrelsen, Rijkswaterstaat, GSA, Geoland, FEMA, Intermap and the GIS user community; Esri Nederland, Community Map Contributors; Esri Community Maps Contributors; Kadaster, Esri, HERE, Garmin, Foursquare, GeoTechnologies, Inc, METI/ NASA, USGS



Verskil in geluidbelasting bij gehinderde locaties - variant 'noord'

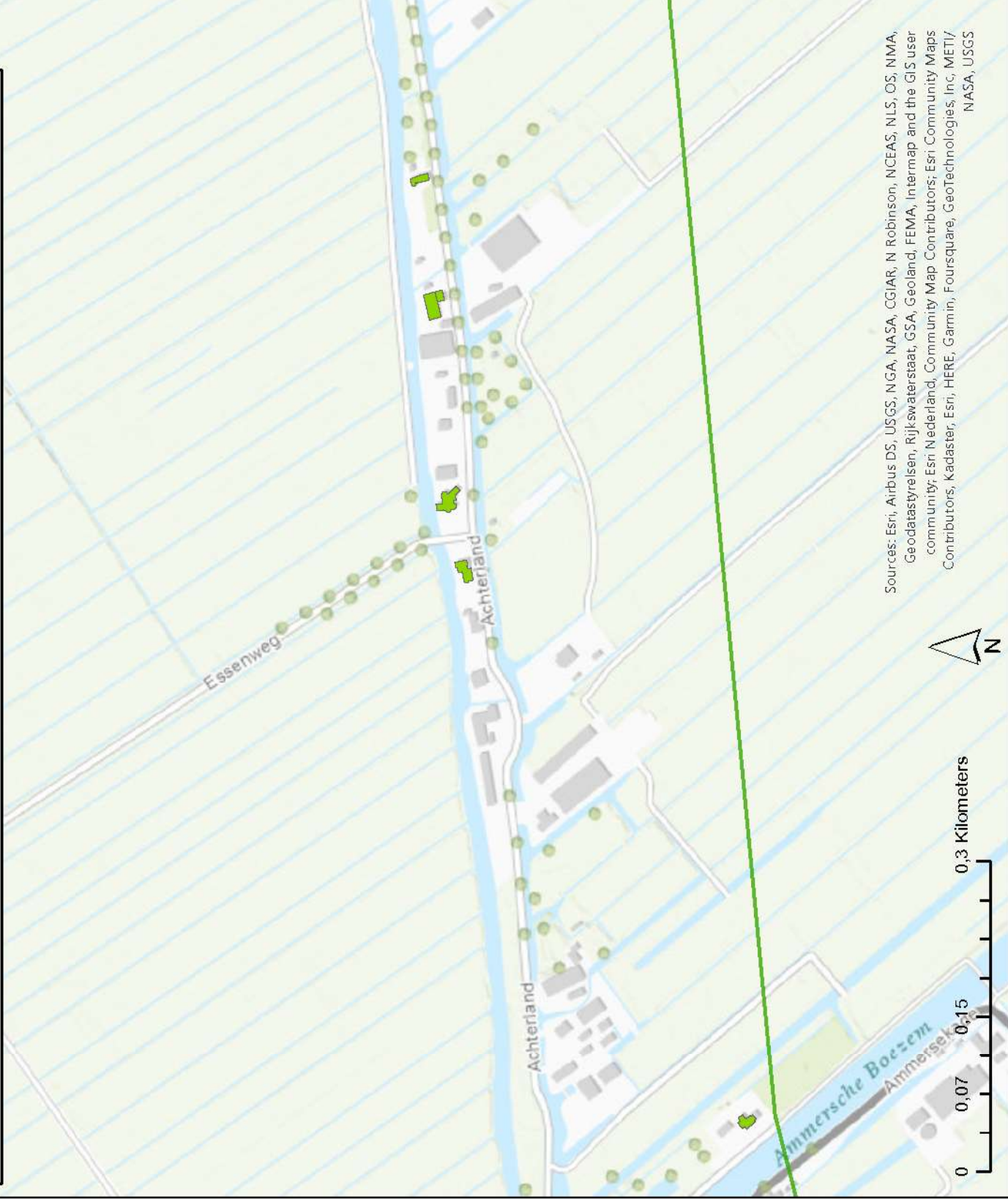
Legenda

Verskil geluidbelasting

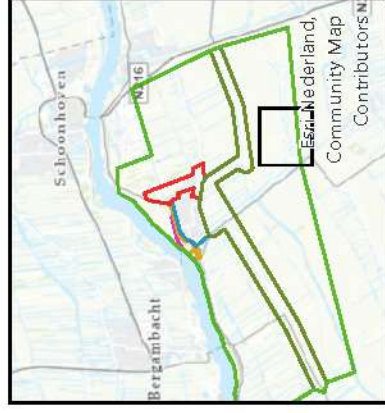
-5 - 0 dB

Deelgebieden

Rest buitengebied



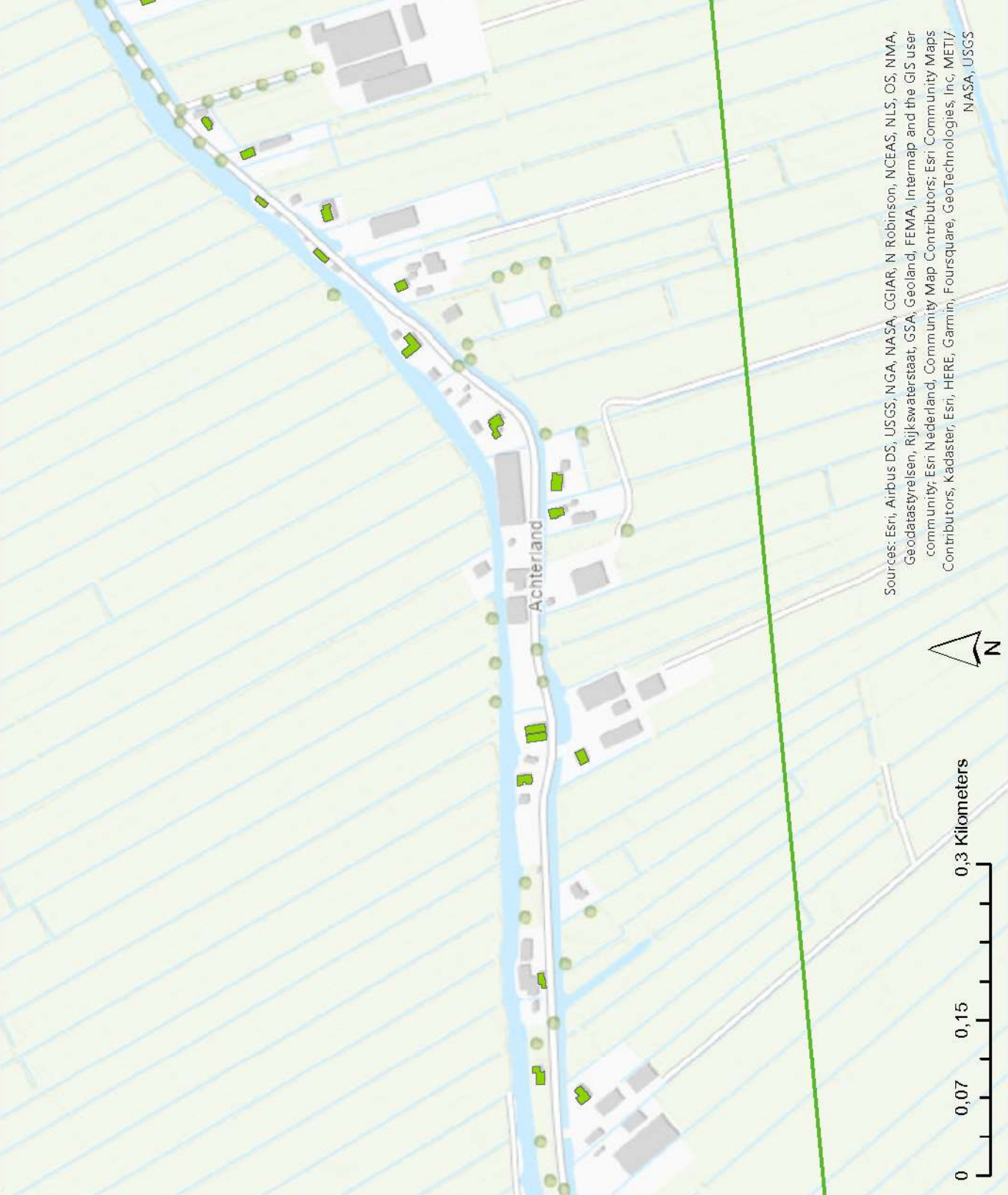
Sources: Esri, Airbus DS, USGS, NGA, NASA, CGIAR, N Robinson, NCEAS, NLS, OS, NMA, Geodatastyrelsen, Rijkswaterstaat, GSA, Geoland, FEMA, Intermap and the GIS user community; Esri Nederland, Community Map Contributors; Esri Community Maps Contributors; Kadaster, Esri, HERE, Garmin, Foursquare, GeoTechnologies, Inc, METI/ NASA, USGS



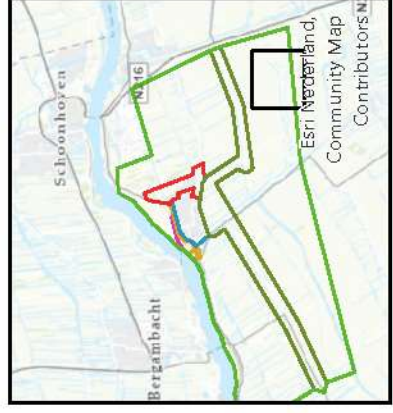
Verskil in geluidbelasting bij gehinderde locaties - variant 'noord'

Legenda

- Verskil geluidbelasting
- 5 - 0 dB
- Deelgebieden
- Rest buitengebied



Sources: Esri, Airbus DS, USGS, NGA, NASA, CGIAR, N Robinson, NCEAS, NLS, OS, NMA, Geodatastyrelsen, Rijkswaterstaat, GSA, Geoland, FEMA, Intermap and the GIS user community; Esri Nederland, Community Map Contributors; Esri Community Maps Contributors; Kadaster, Esri, HERE, Garmin, Foursquare, GeoTechnologies, Inc, METI/ NASA, USGS



Verschil in geluidbelasting bij gehinderde locaties - variant 'noord kort'

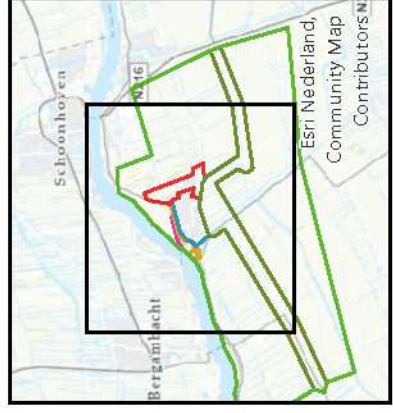
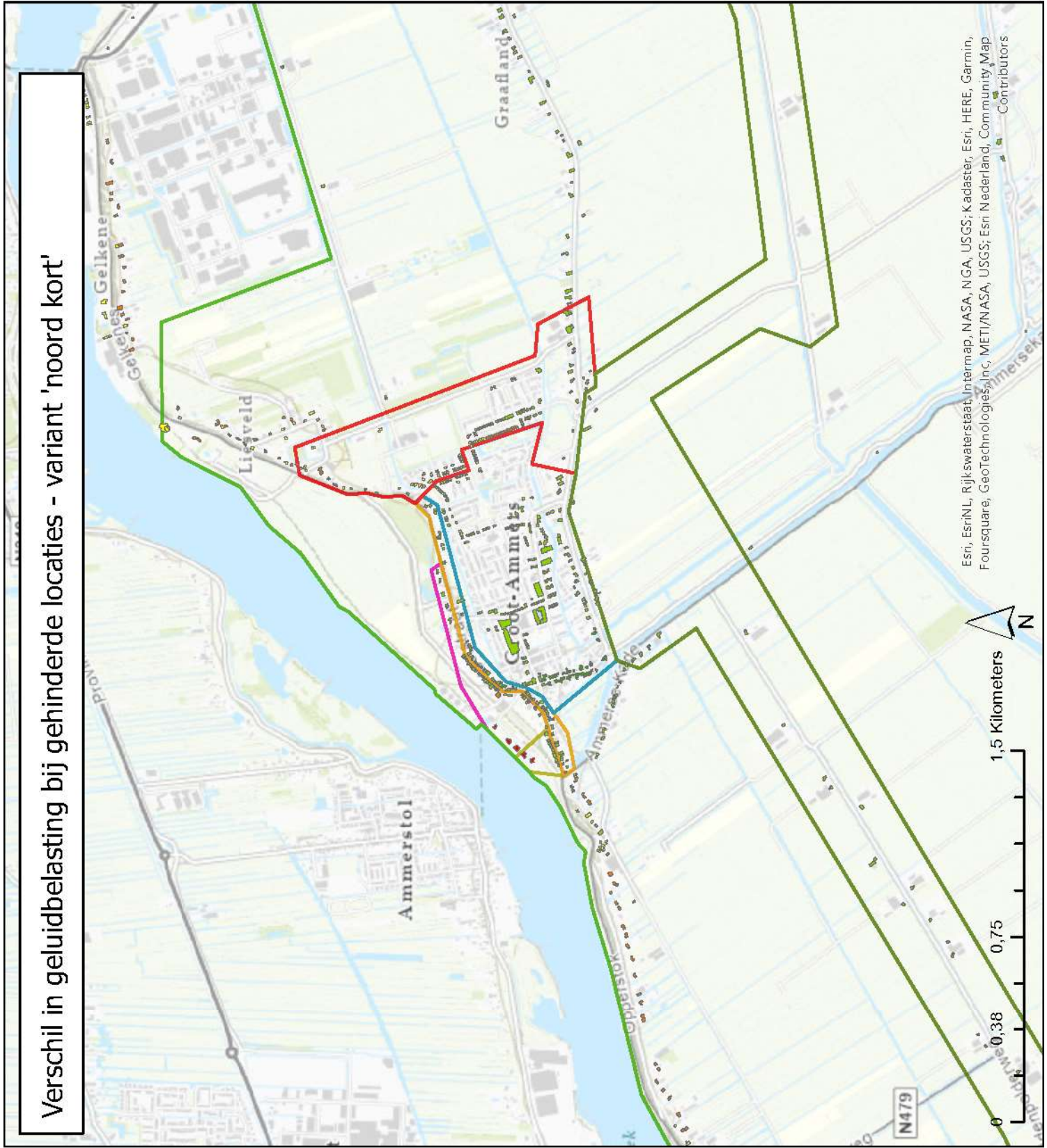
Legenda

Verschil geluidbelasting

- > 5 dB
- 3 - 5 dB
- 1 - 2 dB
- 5 - 0 dB
- < -5 dB

Deelgebieden

- Punt van Sluis aan de dijk
- Voorstraat-Noord
- Voorstraat-Zuid
- Rest kern Groot-Ammers
- Oost-Groot-Ammers
- Invloedsgebied Zuid 60
- Rest buitengebied



Esri, EsriNL, Rijkswaterstaat, Intermap, NASA, NGA, USGS; Kadaster, Esri, HERE, Garmin, Foursquare, Geotechnologies, Inc, METI/NASA, USGS; Esri Nederland, Community Map Contributors

Verskil in geluidbelasting bij gehinderde locaties - variant 'noord kort'

Legenda

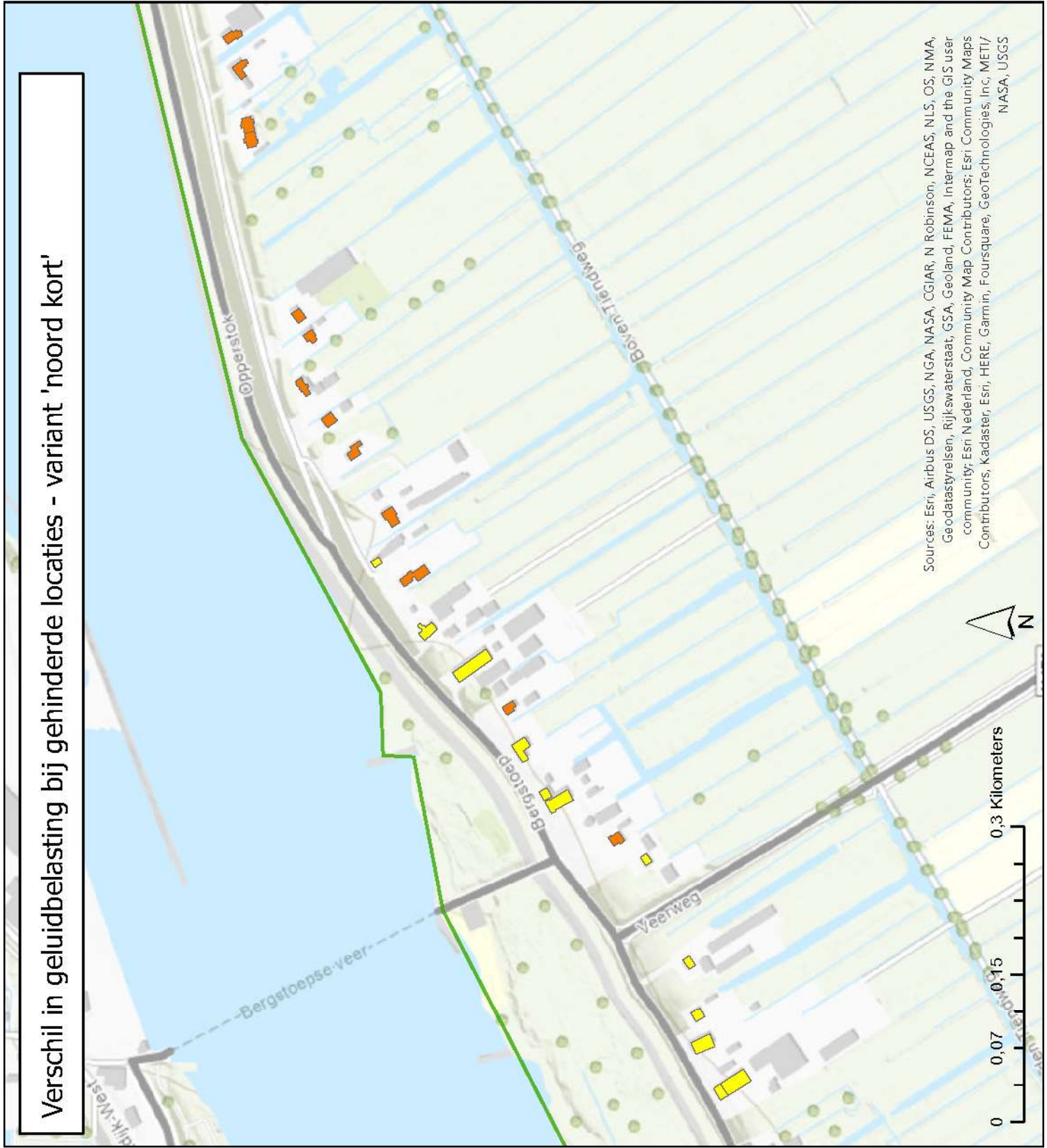
Verskil geluidbelasting

3 - 5 dB

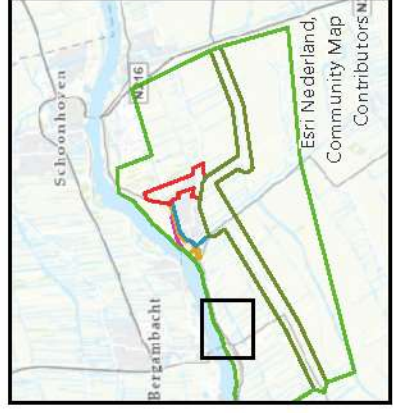
1 - 2 dB

Deelgebieden

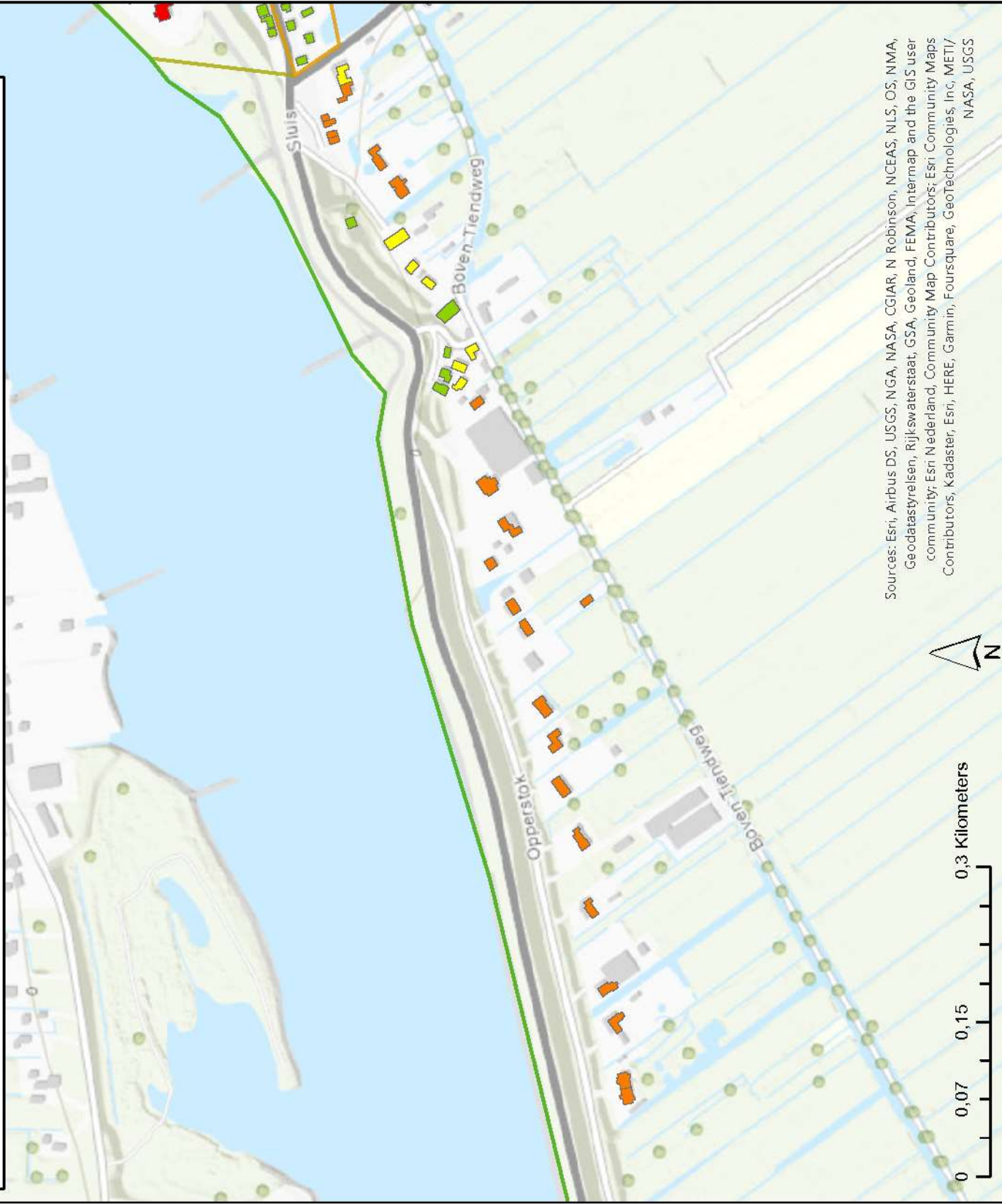
Rest buitengebied



Sources: Esri, Airbus DS, USGS, NGA, NASA, CGIAR, N Robinson, NCEAS, NLS, OS, NMA, Geodatastyrelsen, Rijkswaterstaat, GSA, Geoland, FEMA, Intermap and the GIS user community; Esri Nederland, Community Map Contributors; Esri Community Maps Contributors; Kadaster, Esri, HERE, Garmin, Foursquare, GeoTechnologies, Inc, METI/ NASA, USGS



Verschil in geluidbelasting bij gehinderde locaties - variant 'noord kort'



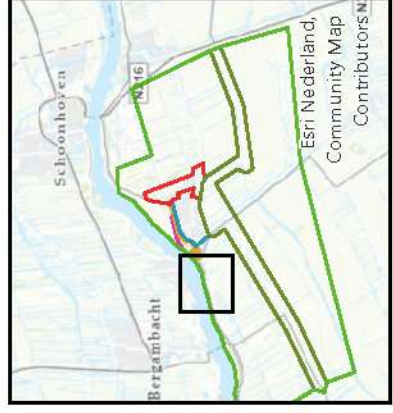
Legenda

Verschil geluidbelasting

- > 5 dB
- 3 - 5 dB
- 1 - 2 dB
- 5 - 0 dB

Deelgebieden

- Punt van Sluis aan de dijk
- Voorstraat-Zuid
- Rest buitengebied



Sources: Esri, Airbus DS, USGS, NGA, NASA, CGIAR, N Robinson, NCEAS, NLS, OS, NMA, Geodatastyrelsen, Rijkswaterstaat, GSA, Geoland, FEMA, Intermap and the GIS user community; Esri Nederland, Community Map Contributors; Esri Community Maps Contributors; Kadaster, Esri, HERE, Garmin, Foursquare, GeoTechnologies, Inc, METI/ NASA, USGS

Verschil in geluidbelasting bij gehinderde locaties - variant 'noord kort'

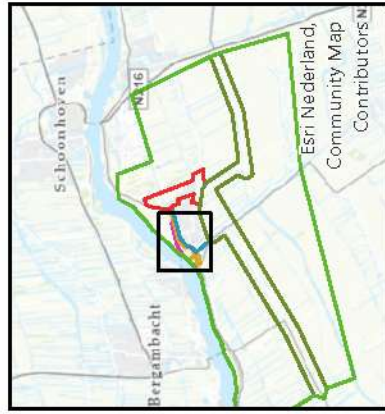
Legenda

Verschil geluidbelasting

- > 5 dB
- 3 - 5 dB
- 1 - 2 dB
- -5 - 0 dB
- < -5 dB

Deelgebieden

- Punt van Sluis aan de dijk
- Voorstraat-Noord
- Voorstraat-Zuid
- Rest kern Groot-Ammers
- Invloedsgebied Zuid 60
- Rest buitengebied



Sources: Esri, Airbus DS, USGS, NGA, NASA, CGIAR, N Robinson, NCEAS, NLS, OS, NMA, Geodatasyrielsen, Rijkswaterstaat, GSA, Geoland, FEMA, Intermap and the GIS user community; Esri Nederland, Community Map Contributors; Esri Community Maps Contributors; Kadaster, Esri, HERE, Garmin, Foursquare, GeoTechnologies, Inc, METI/ NASA, USGS

Verskil in geluidbelasting bij gehinderde locaties - variant 'noord kort'

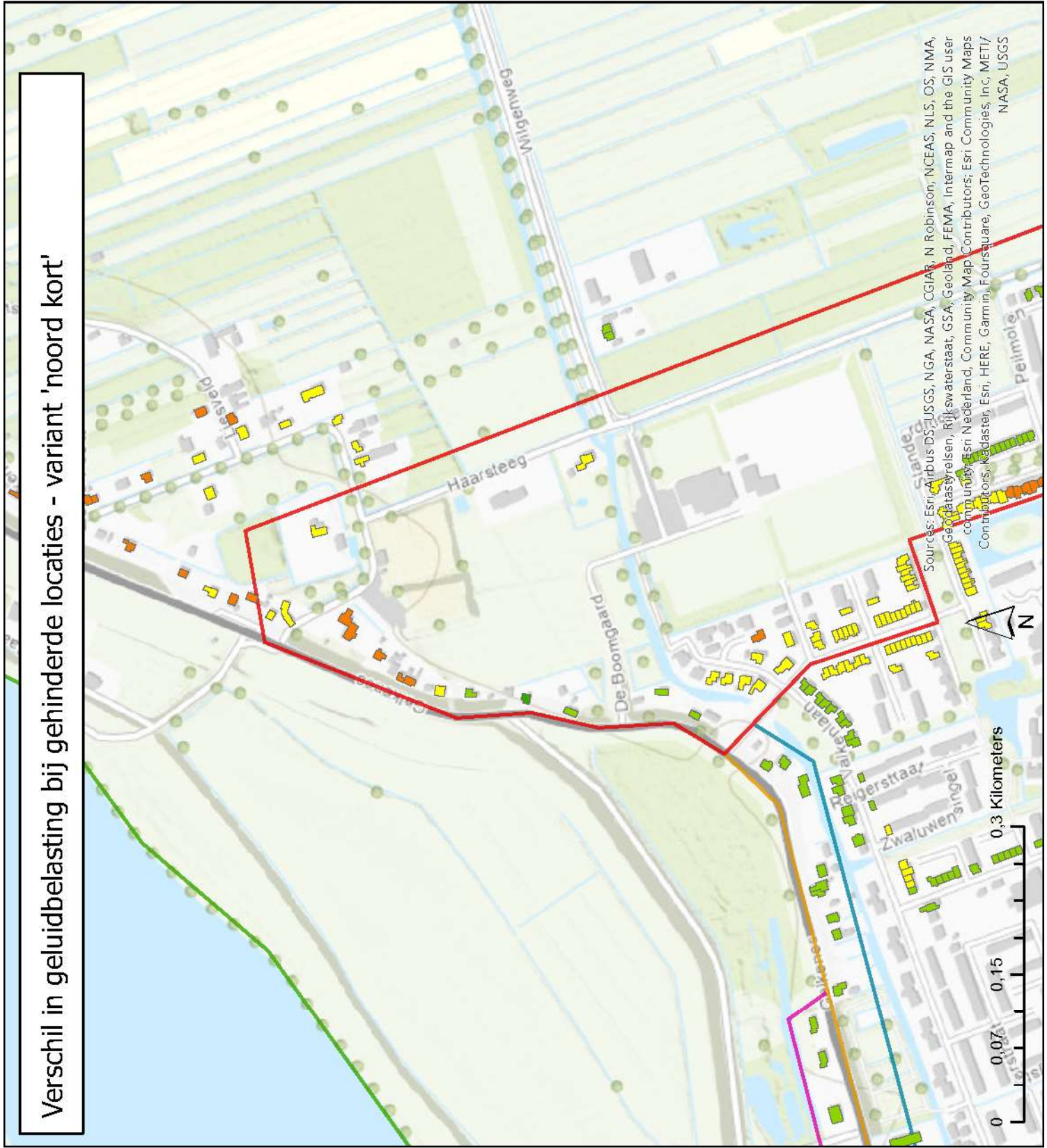
Legenda

Verskil geluidbelasting

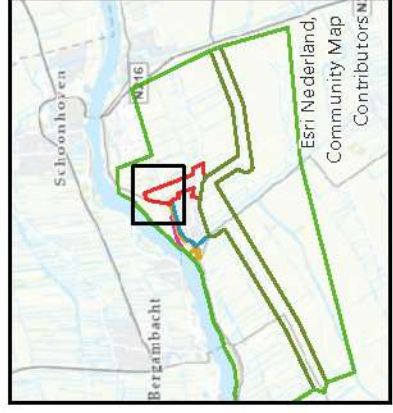
- 3 - 5 dB
- 1 - 2 dB
- 5 - 0 dB
- < -5 dB

Deelgebieden

- Voorstraat-Noord
- Voorstraat-Zuid
- Rest kern Groot-Ammers
- Oost-Groot-Ammers
- Rest buitengebied



Sources: Esri, Airbus DS, USGS, NGA, NASA, CGIAR, N Robinson, NCEAS, NLS, OS, NMA, Geodata by Esri, Rijkswaterstaat, GSA, Geobase, FEMA, Intermap and the GIS user community, Esri Nederland, Community Map Contributors; Esri Community Maps Contributors; Kadaster, Esri, HERE, Garmin, FourSquare, GeoTechnologies, Inc, METI/ NASA, USGS

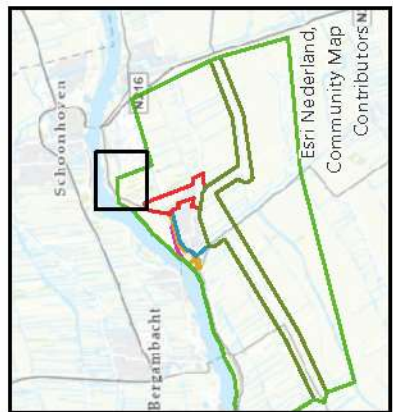


Verskil in geluidbelasting bij gehinderde locaties - variant 'noord kort'

- Legenda**
- Verskil geluidbelasting
- 3 - 5 dB
 - 1 - 2 dB
- Deelgebieden
- Oost-Groot-Ammers
 - Rest buitengebied



Sources: Esri, Airbus DS, USGS, NGA, NASA, CGIAR, N Robinson, NCEAS, NLS, OS, NMA, Geodatasyrelsen, Rijkswaterstaat, GSA, Geoland, FEMA, Intermap and the GIS user community; Esri Nederland, Community Map Contributors; Esri Community Maps Contributors; Kadaster, Esri, HERE, Garmin, Foursquare, GeoTechnologies, Inc, METI/ NASA, USGS



Vershil in geluidbelasting bij gehinderde locaties - variant 'noord kort'

Legenda

Vershil geluidbelasting

-5 - 0 dB

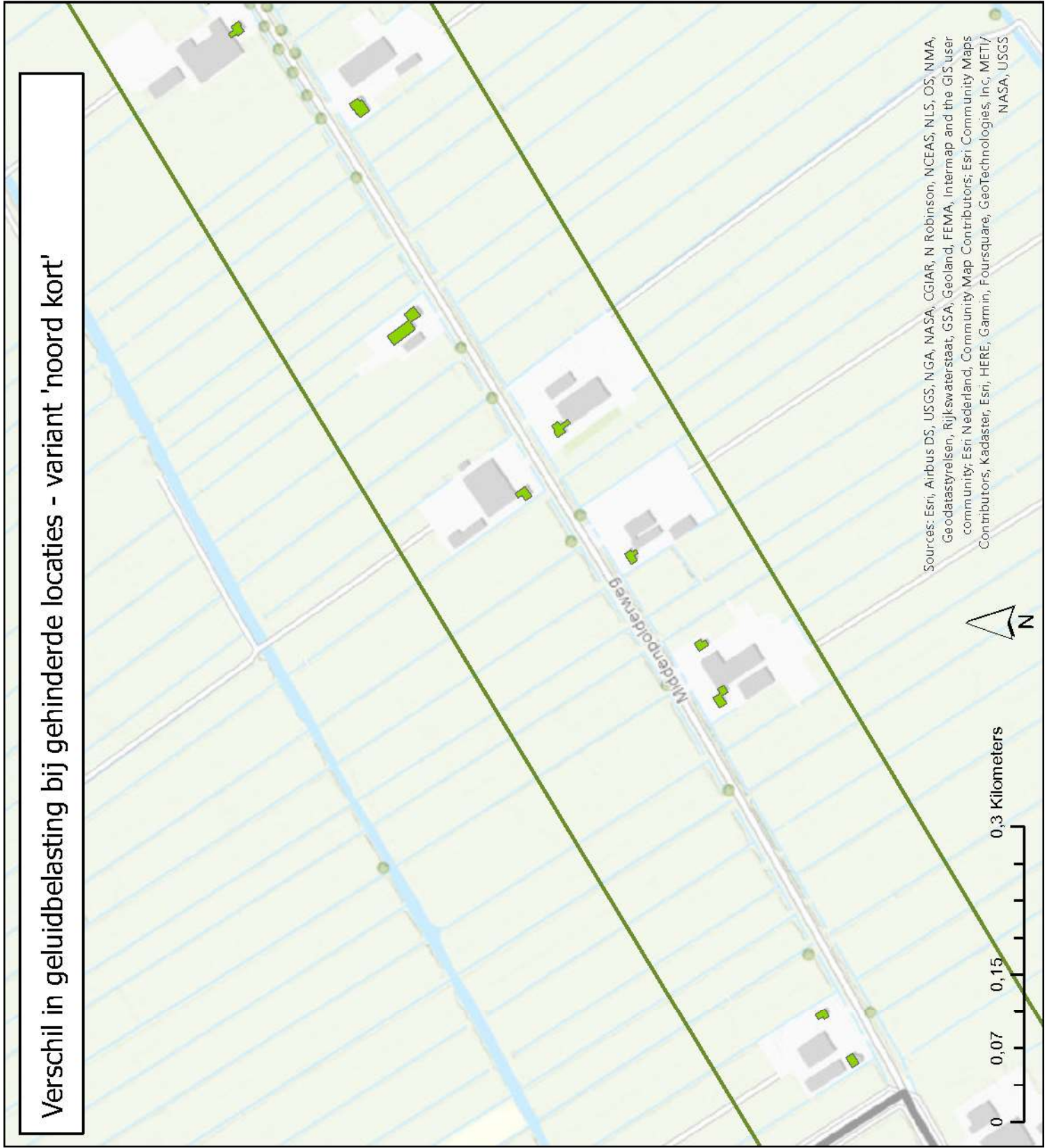
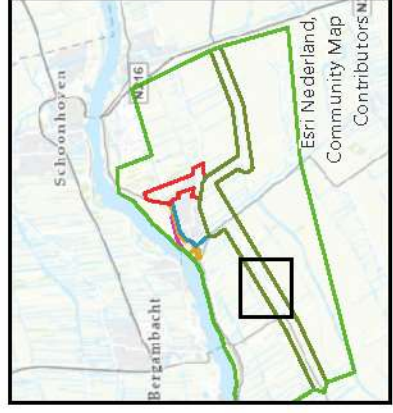
Deelgebieden

Invoedsgebied Zuid 60

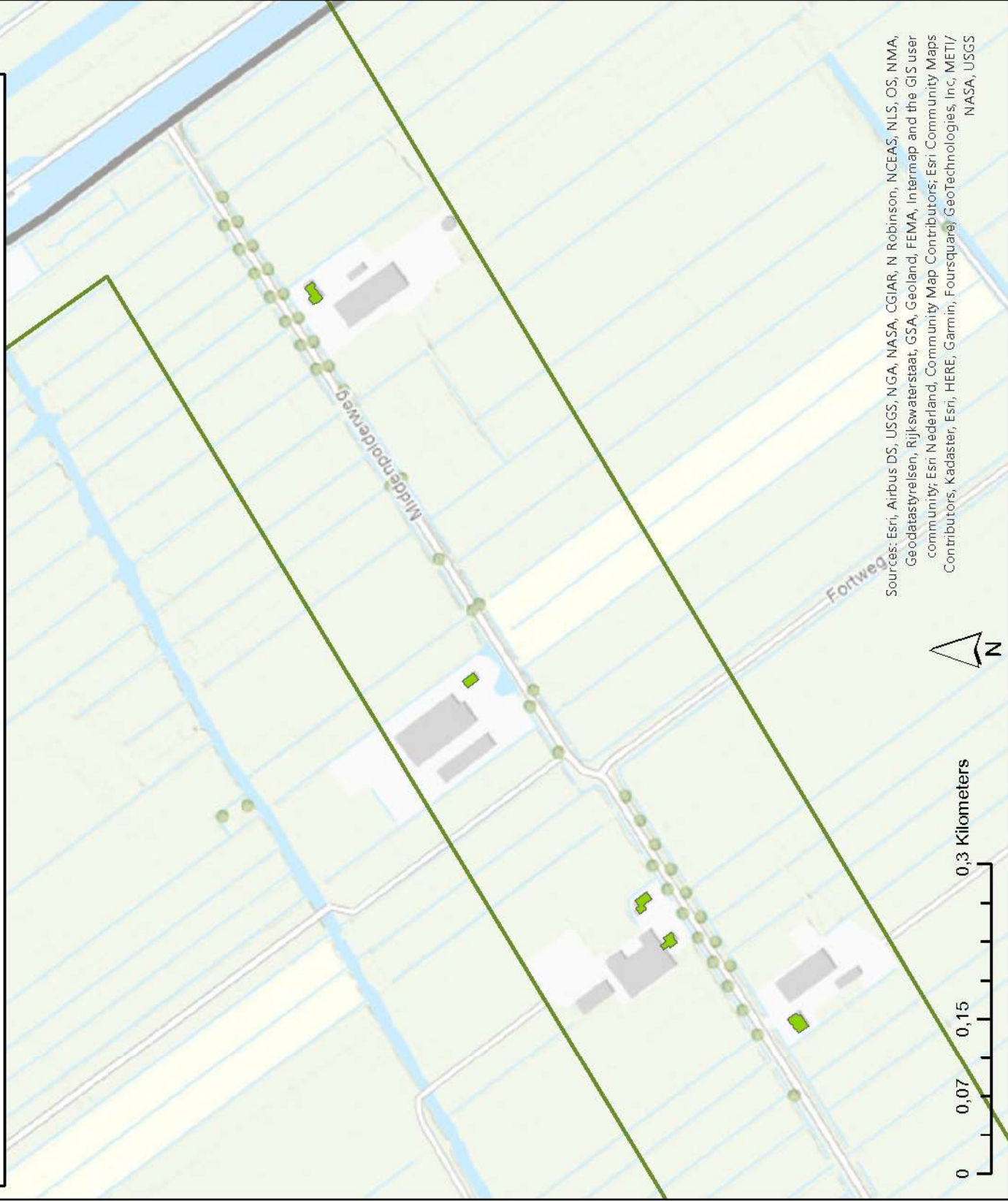
Rest buitengebied

Sources: Esri, Airbus DS, USGS, NGA, NASA, CGIAR, N Robinson, NCEAS, NLS, OS, NMA, Geodatastyrelsen, Rijkswaterstaat, GSA, Geoland, FEMA, Intermap and the GIS user community; Esri Nederland, Community Map Contributors; Esri Community Maps Contributors; Kadaster, Esri, HERE, Garmin, Foursquare, GeoTechnologies, Inc, METI/ NASA, USGS

0 0,07 0,15 0,3 Kilometers



Verschil in geluidbelasting bij gehinderde locaties - variant 'noord kort'



Legenda

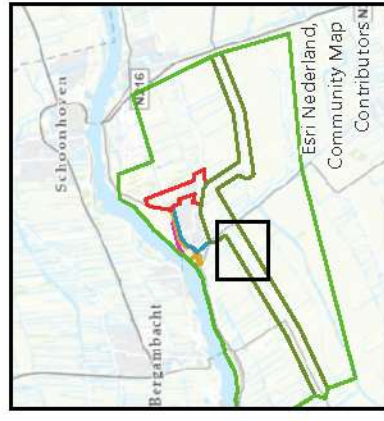
Verschil geluidbelasting

-5 - 0 dB

Deelgebieden

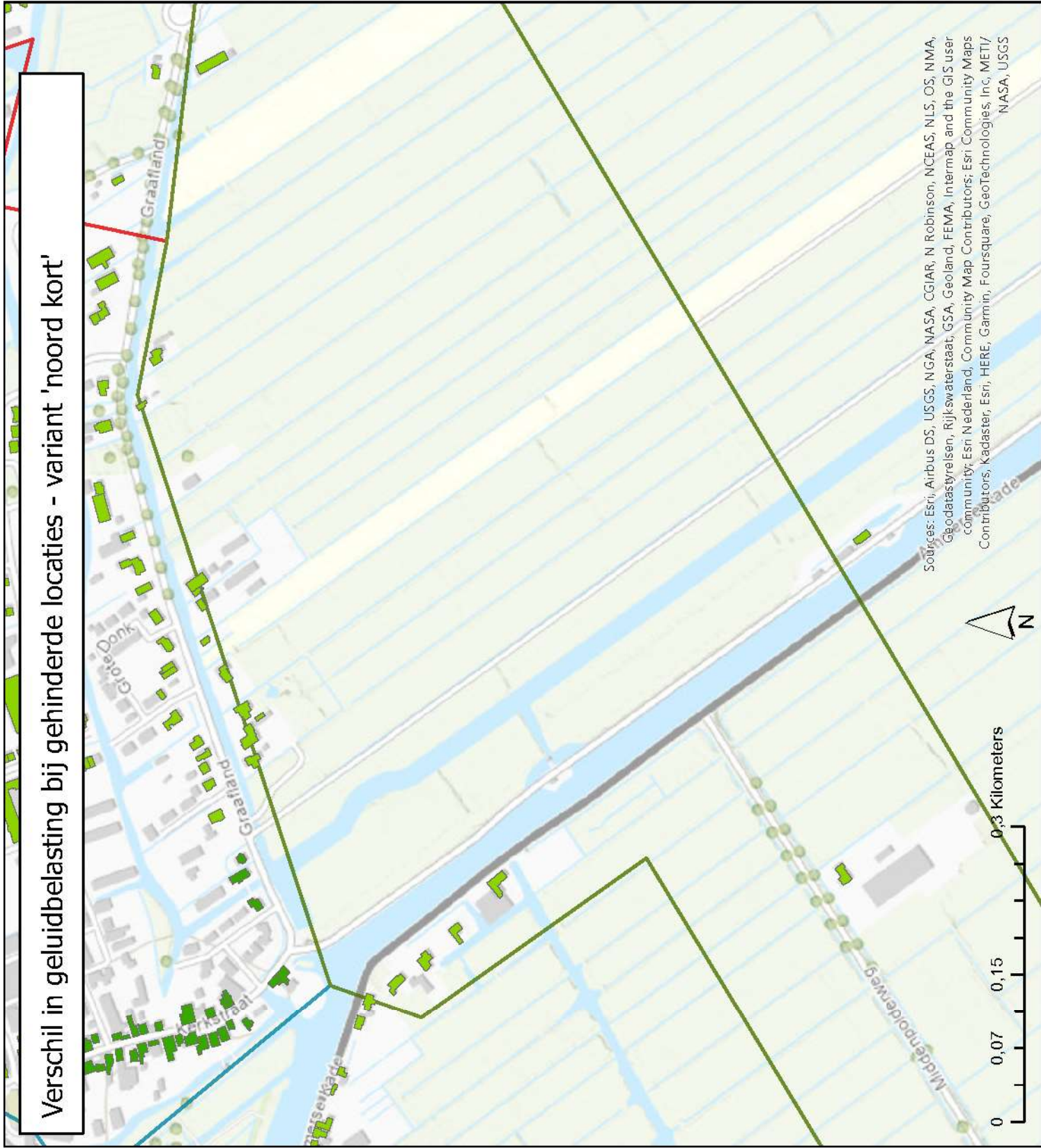
Invoedsgebied Zuid 60

Rest buitengebied



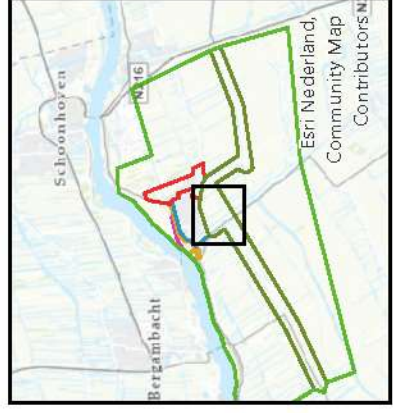
Sources: Esri, Airbus DS, USGS, NGA, NASA, CGIAR, N Robinson, NCEAS, NLS, OS, NMA, Geodatastyle.nl, Rijkswaterstaat, GSA, Geoland, FEMA, Intermap and the GIS user community; Esri Nederland, Community Map Contributors; Esri Community Maps Contributors; Kadaster, Esri, HERE, Garmin, Foursquare, GeoTechnologies, Inc, METI/ NASA, USGS

Vershil in geluidbelasting bij gehinderde locaties - variant 'noord kort'



Legenda

- Vershil geluidbelasting
- 5 - 0 dB
 - < -5 dB
- Deelgebieden
- Voorstraat-Zuid
 - Rest kern Groot-Ammers
 - Oost-Groot-Ammers
 - Invloedsgebied Zuid 60
 - Rest buitengebied



Sources: Esri, Airbus DS, USGS, NGA, NASA, CGIAR, N Robinson, NCEAS, NLS, OS, NMA, Geodastyrelsen, Rijkswaterstaat, GSA, Geoland, FEMA, Intermap and the GIS user community; Esri Nederland, Community Map Contributors; Esri Community Maps Contributors; Kadaster, Esri, HERE, Garmin, Foursquare, GeoTechnologies, Inc, METI/ NASA, USGS

Vershil in geluidbelasting bij gehinderde locaties - variant 'noord kort'

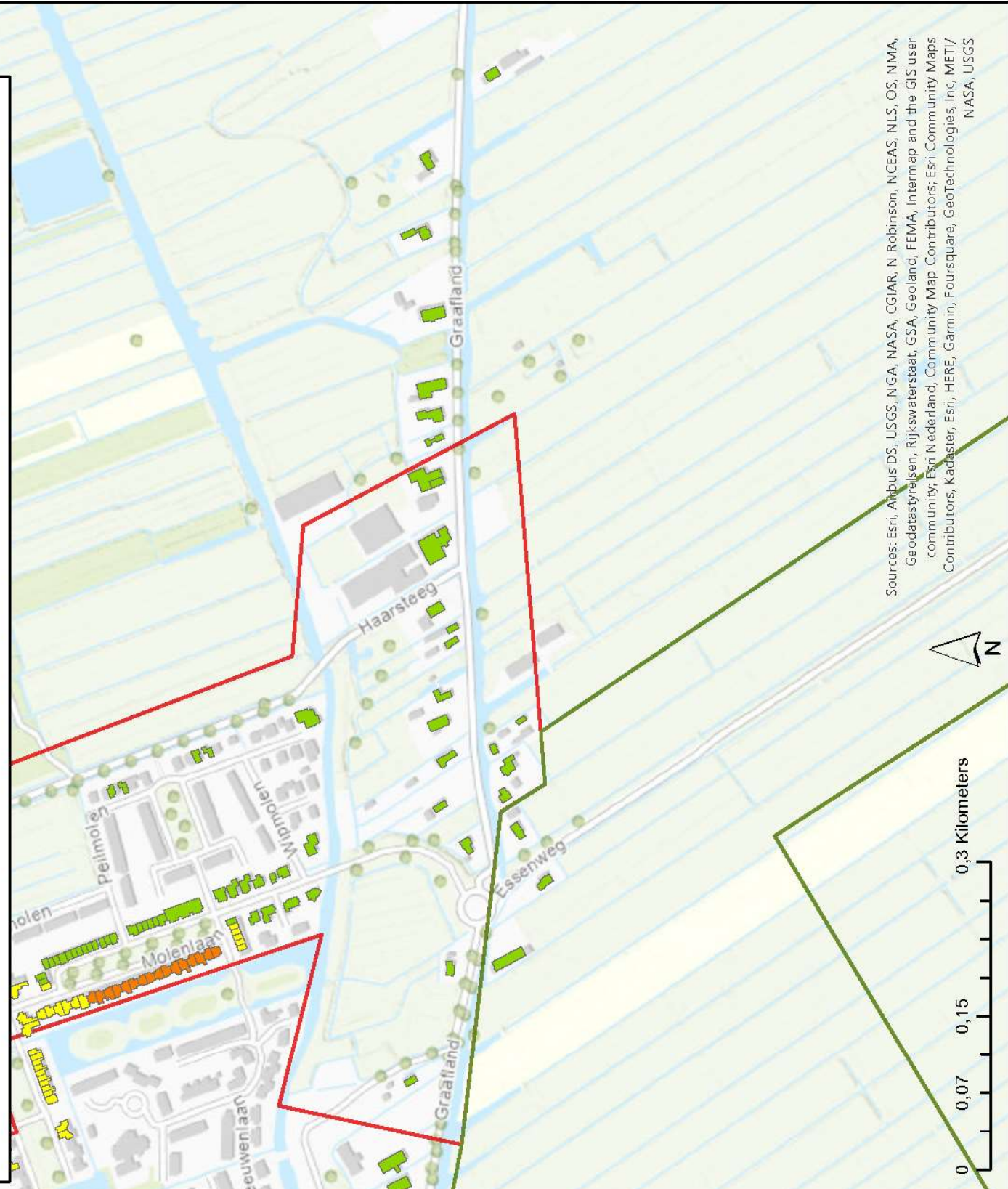
Legenda

Vershil geluidbelasting

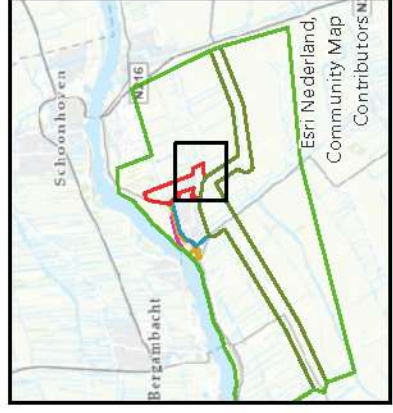
- 3 - 5 dB
- 1 - 2 dB
- 5 - 0 dB

Deelgebieden

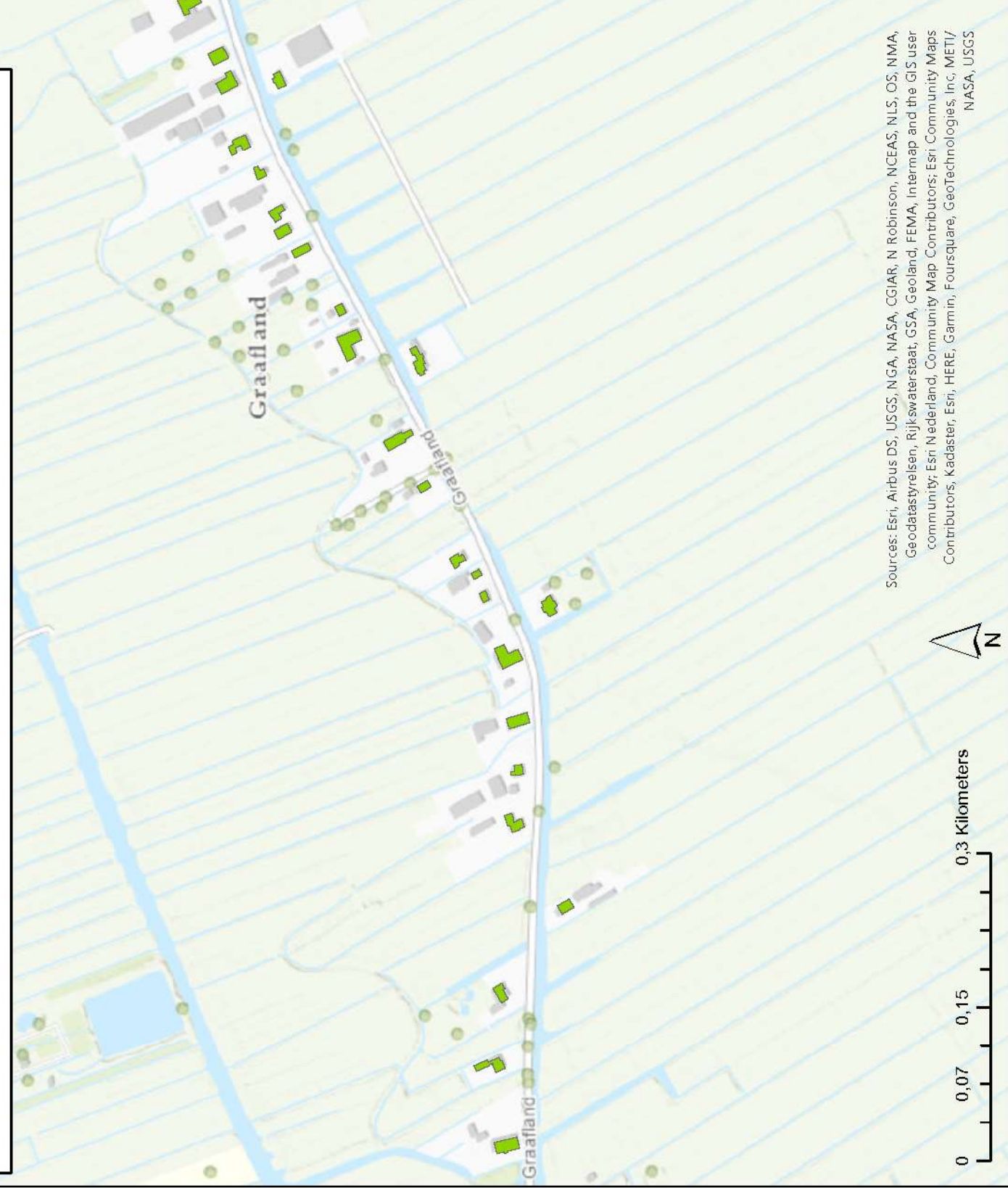
- Rest kern Groot-Ammers
- Oost-Groot-Ammers
- Invloedsgebied Zuid 60
- Rest buitengebied



Sources: Esri, Airbus DS, USGS, NGA, NASA, CGIAR, N Robinson, NCEAS, NLS, OS, NMA, Geodastylrengen, Rijkswaterstaat, GSA, Geoland, FEMA, Intermap and the GIS user community; Esri Nederland, Community Map Contributors; Esri Community Maps Contributors; Kadaster, Esri, HERE, Garmin, Foursquare, GeoTechnologies, Inc, METI/ NASA, USGS

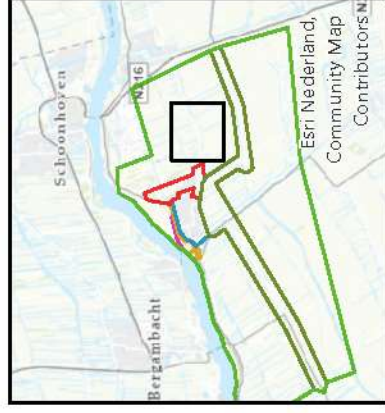


Verskil in geluidbelasting bij gehinderde locaties - variant 'noord kort'



Legenda

- Verskil geluidbelasting
- 5 - 0 dB
- Deelgebieden
- Rest buitengebied



Sources: Esri, Airbus DS, USGS, NGA, NASA, CGIAR, N Robinson, NCEAS, NLS, OS, NMA, Geodatastyrelsen, Rijkswaterstaat, GSA, Geoland, FEMA, Intermap and the GIS user community; Esri Nederland, Community Map Contributors; Esri Community Maps Contributors; Kadaster, Esri, HERE, Garmin, Foursquare, GeoTechnologies, Inc, METI/ NASA, USGS

Verskil in geluidbelasting bij gehinderde locaties - variant 'noord kort'

Legenda

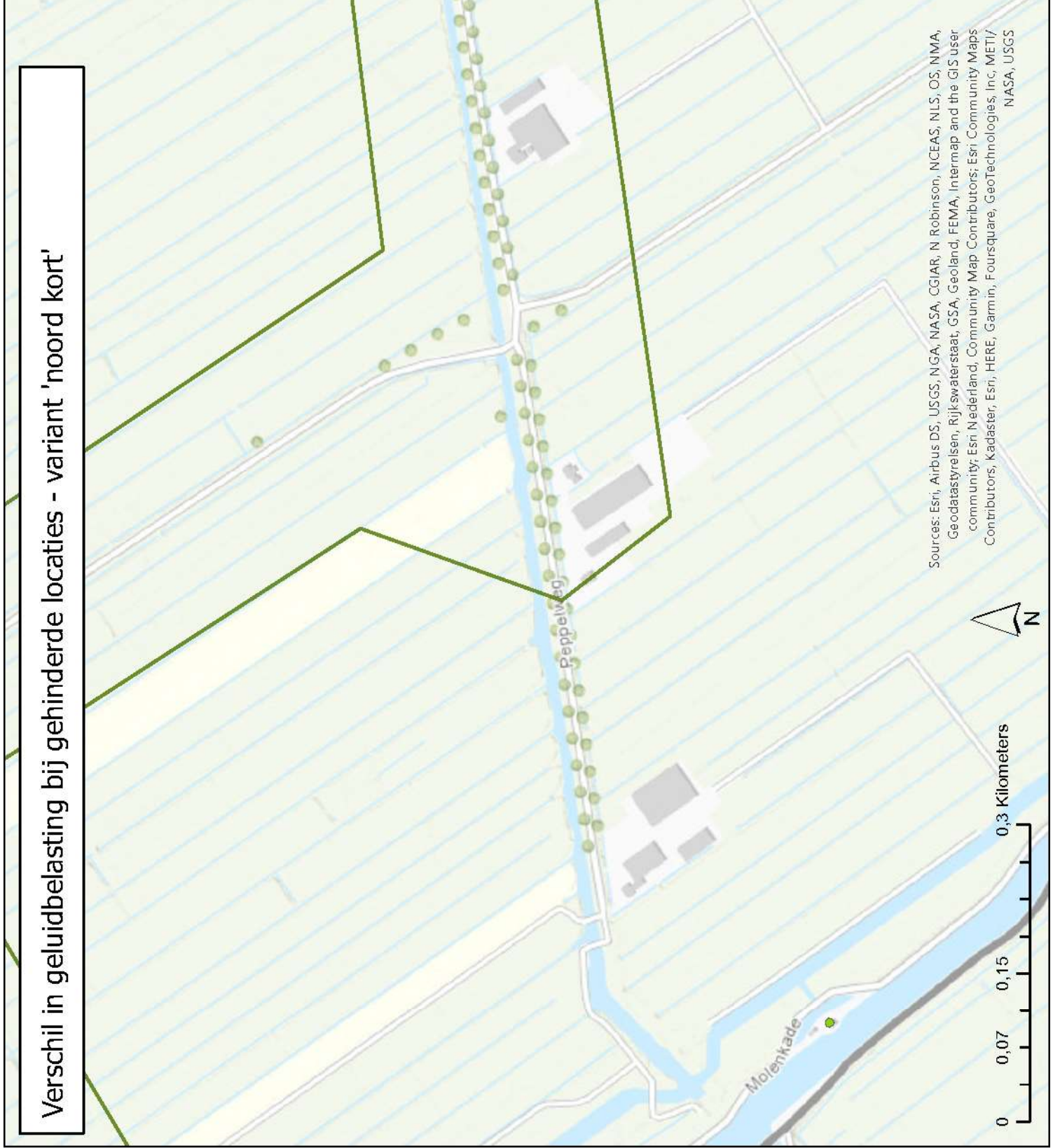
Verskil geluidbelasting

-5 - 0 dB

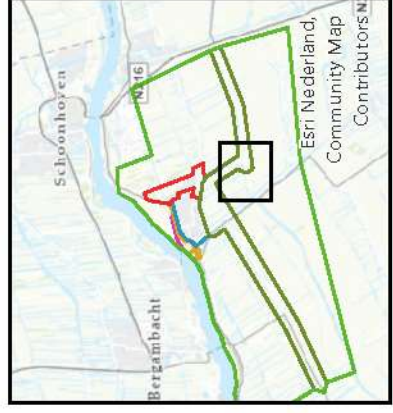
Deelgebieden

Invloedsgebied Zuid 60

Rest buitengebied



Sources: Esri, Airbus DS, USGS, NGA, NASA, CGIAR, N Robinson, NCEAS, NLS, OS, NMA, Geodatastyrelsen, Rijkswaterstaat, GSA, Geoland, FEMA, Intermap and the GIS user community; Esri Nederland, Community Map Contributors; Esri Community Maps Contributors; Kadaster, Esri, HERE, Garmin, Foursquare, GeoTechnologies, Inc, METI/ NASA, USGS



Verskil in geluidbelasting bij gehinderde locaties - variant 'noord kort'

Legenda

Verskil geluidbelasting

-5 - 0 dB

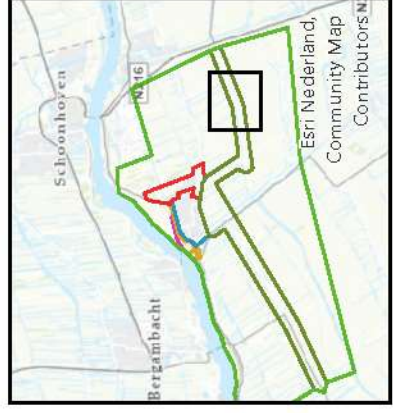
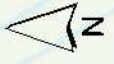
Deelgebieden

Invloedsgebied Zuid 60

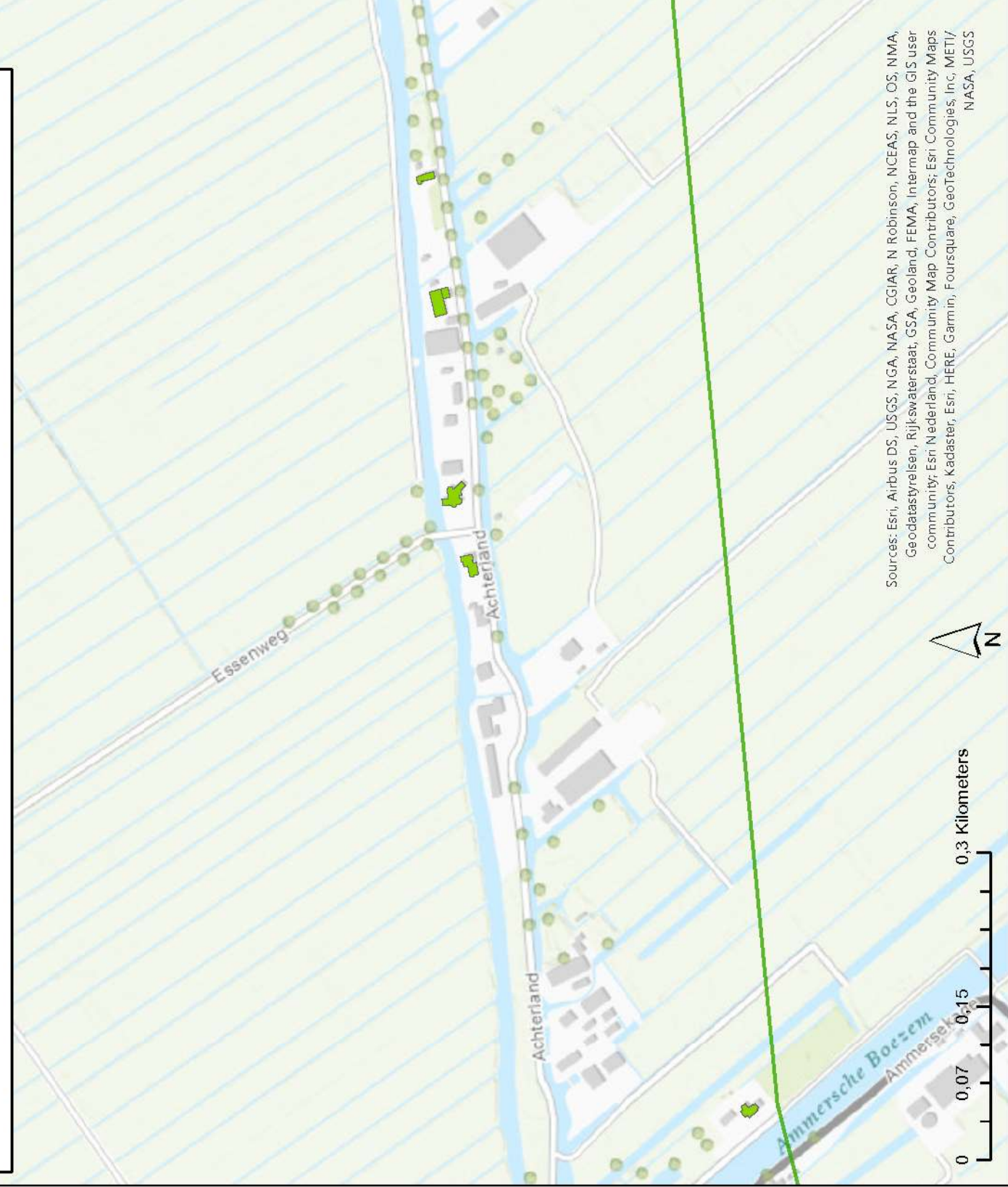
Rest buitengebied



Sources: Esri, Airbus DS, USGS, NGA, NASA, CGIAR, N Robinson, NCEAS, NLS, OS, NMA, Geodatastyrelsen, Rijkswaterstaat, GSA, Geoland, FEMA, Intermap and the GIS user community; Esri Nederland, Community Map Contributors; Esri Community Maps Contributors; Kadaster, Esri, HERE, Garmin, Foursquare, GeoTechnologies, Inc, METI/ NASA, USGS



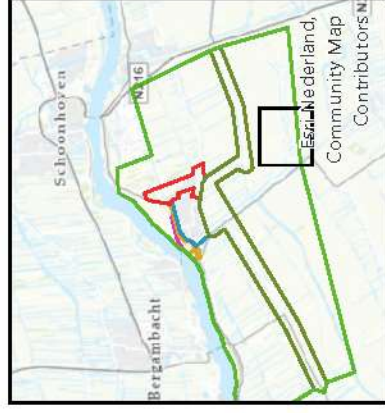
Verskil in geluidbelasting bij gehinderde locaties - variant 'noord kort'



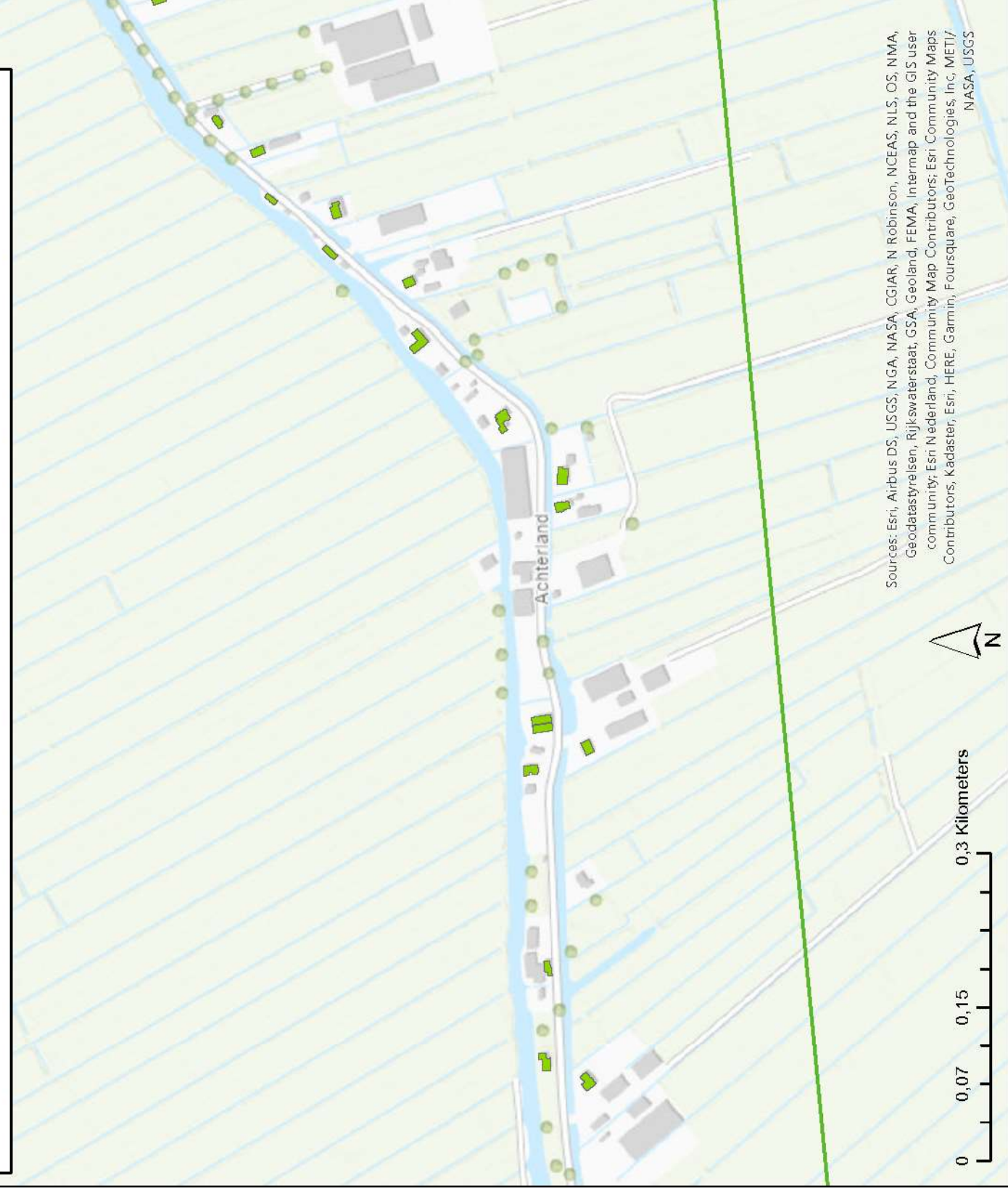
Sources: Esri, Airbus DS, USGS, NGA, NASA, CGIAR, N Robinson, NCEAS, NLS, OS, NMA, Geodatastyrelsen, Rijkswaterstaat, GSA, Geoland, FEMA, Intermap and the GIS user community; Esri Nederland, Community Map Contributors; Esri Community Maps Contributors; Kadaster, Esri, HERE, Garmin, Foursquare, GeoTechnologies, Inc, METI/ NASA, USGS

Legenda

- Verskil geluidbelasting
- 5 - 0 dB
- Deelgebieden
- Rest buitengebied

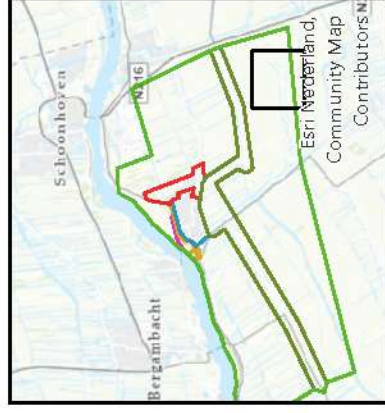


Vershil in geluidbelasting bij gehinderde locaties - variant 'noord kort'



Legenda

- Vershil geluidbelasting
- 5 - 0 dB
- Deelgebieden
- Rest buitengebied



Sources: Esri, Airbus DS, USGS, NGA, NASA, CGIAR, N Robinson, NCEAS, NLS, OS, NMA, Geodatastyrelsen, Rijkswaterstaat, GSA, Geoland, FEMA, Intermap and the GIS user community; Esri Nederland, Community Map Contributors; Esri Community Maps Contributors; Kadaster, Esri, HERE, Garmin, Foursquare, GeoTechnologies, Inc, METI/ NASA, USGS

Verschil in geluidbelasting bij gehinderde locaties - variant 'noord lang'

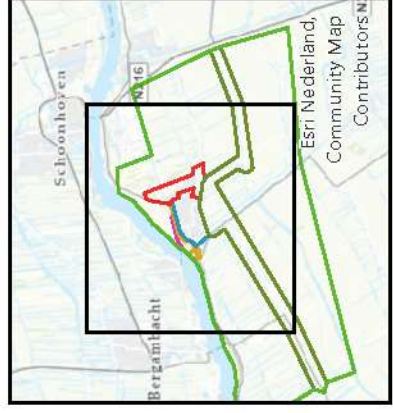
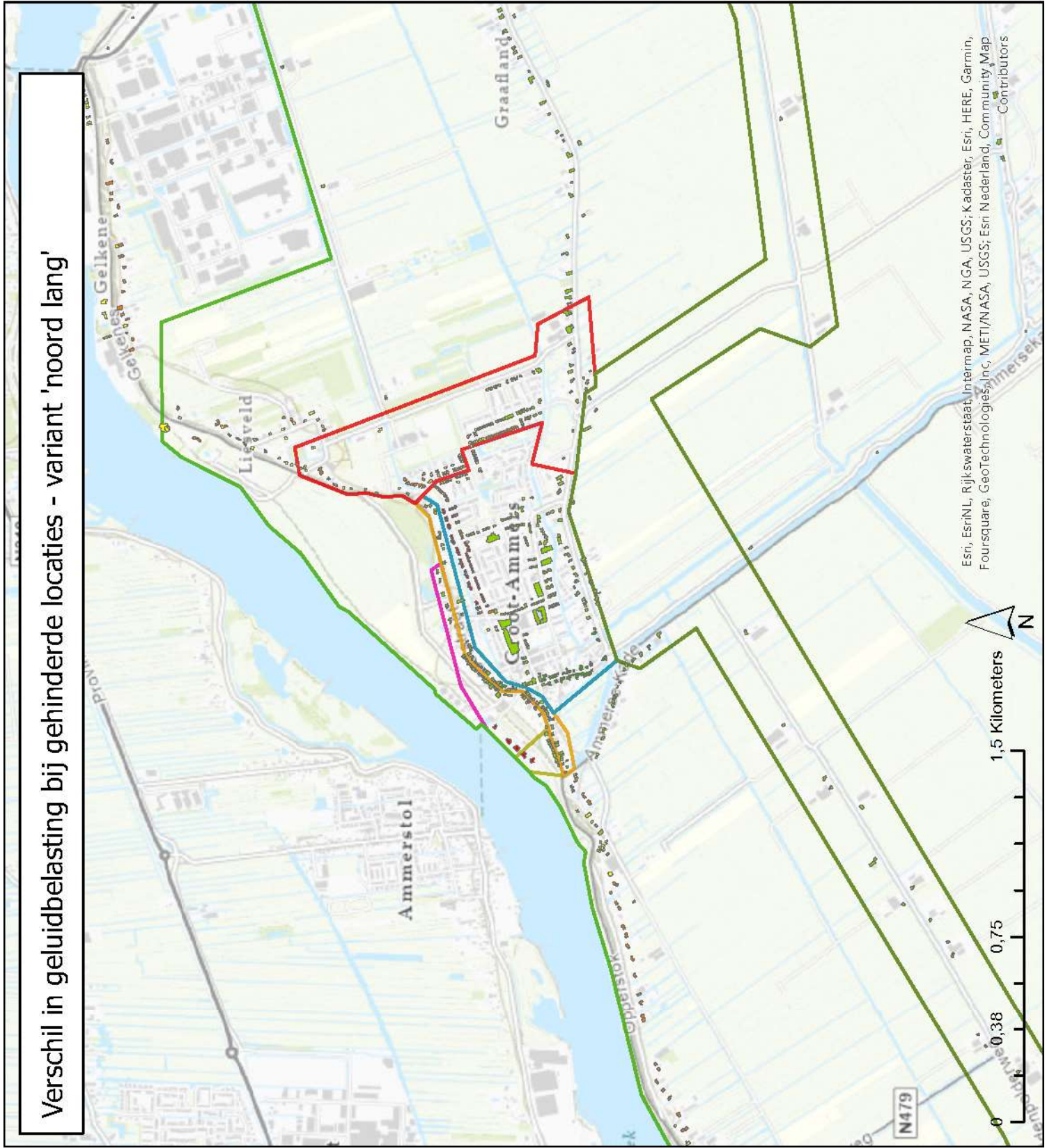
Legenda

Verschil geluidbelasting

- > 5 dB
- 3 - 5 dB
- 1 - 2 dB
- 5 - 0 dB
- < -5 dB

Deelgebieden

- Punt van Sluis aan de dijk
- Voorstraat-Noord
- Voorstraat-Zuid
- Rest kern Groot-Ammers
- Oost-Groot-Ammers
- Invoedsgebied Zuid 60
- Rest buitengebied



Esri, EsriNL, Rijkswaterstaat, Intermap, NASA, NGA, USGS; Kadaster, Esri, HERE, Garmin, Foursquare, Geotechnologies, Inc, METI/NASA, USGS; Esri Nederland, Community Map Contributors